

digiLED High Resolution Indoor SERIES

5, 3.9, 3.5, 3.1, 2.7, 2.5, 1.9 & 1.6mm



digiLED



LIGHTWEIGHT



LOW NOISE



WIDEVIEW



HIGH CONTRAST



CE
FCC
EMC
US & EU
CERTIFIED

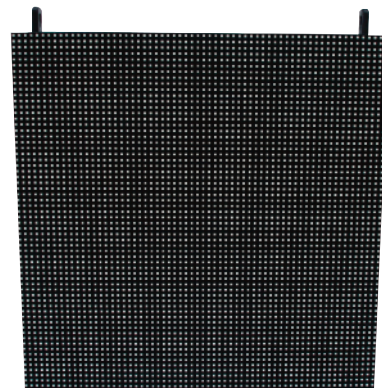
CE Certified, lightweight, silent modules, manufactured to high tolerances to create super smooth hi-res displays.

Contact T +44 (0) 20 7381 7840 info@digiLED.com www.digiLED.com

A collection from our range of High, V-Hi-Res and Ultra Hi-Res Solutions for modular LED screens

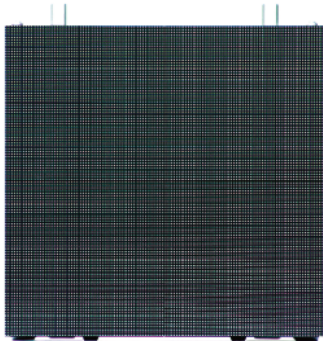
MCKi5

The entry level display for this hi-res top quality series of products is the MCKi5. Based on the same mechanical design as the industry standard MCK series of indoor/outdoor products. It represents a robust and reliable system for fixed installations and rental applications.



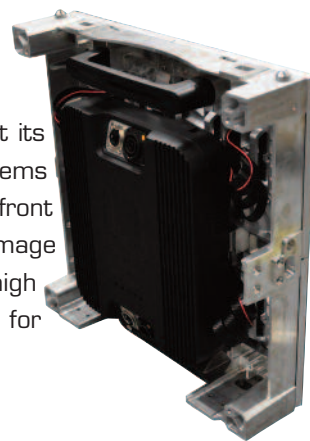
HRi3900

Our first truly hi-res product is the HRi3900. Similar to the MCK range, it's based on a 500mm x 500mm frame size but with significantly higher mechanical tolerances. It also incorporates the lightweight, low noise and wide viewing angles that are trademarks of the digiLED range. Already highly popular with rental companies, it is also becoming successful in the hi-res installation market, particularly where its magnetic screen surface means that access to the rear of the display is no longer required.



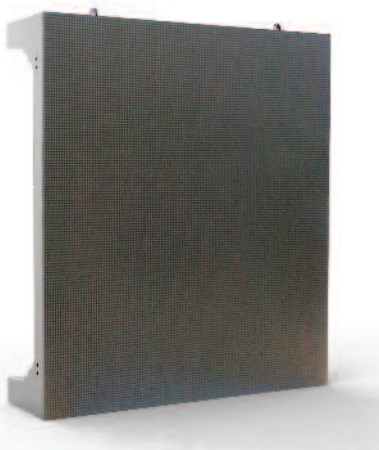
VHi-Res HRi3570, HRi3125 and HRi2770

These superb black faced LED modules represent cutting edge hi-res technology at its best. Loaded with beneficial features the VHi-Res is in a class of its own. The systems offer wide viewing angles without colour shift, minimum viewing distances below 2m, front access and the all-important on-board calibration. With digiLED's legendary image reproduction featuring 16 bit greyscale and refresh rates above 2000Hz with high contrast ratios for punchy images, these HRi products are the clear choice for applications where only the best will do.



Ultra Hi-Res - HRi2540, HRi1930, HRi1690

With a passion for pushing the boundaries of technology, we are proud to be offering our ultra hi-res series of products. With pitches as low as 1.69mm, these are truly state of the art and are manufactured to the critical tolerances required to produce a seamless and truly flat display. With high refresh rates and 16-bit processing, they provide unparalleled quality at the very top end of the market



digiLED

Contact T +44 (0) 20 7381 7840 info@digiLED.com www.digiLED.com

MCKi5

A creative solution

Make it big, make it bold – whether you want a dynamic video backdrop, dramatic lighting effects or video displays, digiLED MCKi5 offers seamless performance to give your shows the wow factor!

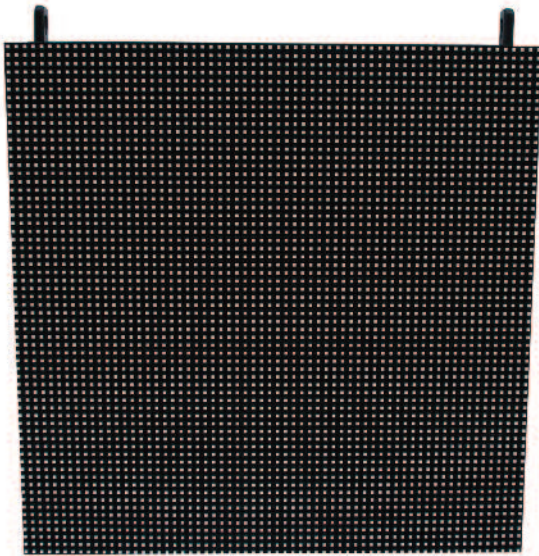
With the ability for hanging or stacking screen builds for super fast installations, MCKi5 is all geared up for the rental market.

IOT - TV Mode

Developed for TV and concert touring applications, digiLED's Image Optimisation Technology (IOT) ensures high quality image reproduction in any situation. The powerful new processing system maintains full 16 bit depth whatever the brightness, for images free of contouring and quantising, with perfect greyscale transition. Further IOT firmware configurations are preset for frequently used situations, whether the job demands maximum refresh rate, brightness or super smooth greyscales.

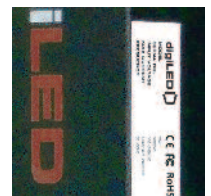
All you need for the events market

- Lightweight at under 10Kg or less per module
- Silent
- Stacking & hanging system
- Programmable refresh up to 1,500Hz
- CE, EMC, FCC approved models
- Compatible mechanics with MCK models
- Fast-rig system
- Slim at 100mm depth



Standard system accessories

- digiLED Navigator-NV screen interface
- Flight cases
- digiPRO & PRO HD processors
- Hanging bars
- Stacking system





MODULE SPECIFICATIONS - MCKi5

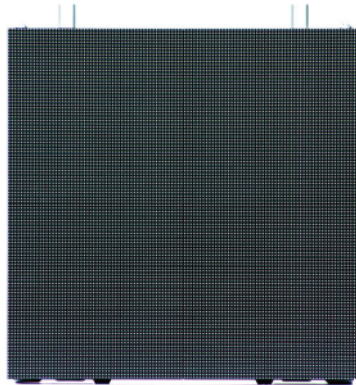
Product Name		MCKi5tbR
LEDs		
LEDs Per Pixel		1R1G1B
Red Wavelength (Dominant)	nm	620
Green Wavelength (Dominant)	nm	520
Blue Wavelength (Dominant)	nm	465
LED Type		Ledman/Silan (Total Black)
PIXELS		
Pixel Configuration		3-in-1
LEDs Per Area	LED/m ²	110,947
Physical Pixel Pitch	mm	5.2
Physical Pixel Resolution (Width)	pixels	96
Physical Pixel Resolution (Height)	pixels	96
Physical Pixel Resolution (Total per module)	pixels	9,246
Physical Pixels Per Area	pixels/m ²	36,982
MODULE		
Active Module Width	mm	500
Active Module Height	mm	500
Active Module Area	m ²	0.25
Module Depth	mm	100
Module Weight	kg	10
LED Tile Width	mm	500
LED Tile Height	mm	125
Viewing Angle - Horizontal	degrees	160
Viewing Angle - Vertical	degrees	145
Ingress Protection (Front)		IP31
Ingress Protection (Back)		IP31
Cabinet Material and Surface Finish		Aluminium
Storage Temperature Range	degree C	-20 to +45
Operating Temperature Range	degree C	-20 to +45
Operating Humidity Range	%	10 to 95 Non-condensing
COLOUR		
Processing Depth	colours	16bit
Refresh Rate	Hz	1,500
BRIGHTNESS		
Brightness (After Calibration)	nits	2,200
Brightness Control	*	Auto/Manual
POWER		
Input Voltage	VAC	110/220
Input Power (Average)	watts	60
Input Power (Maximum)	watts	200
OTHER		
Lifespan	hours	100,000
Computer System Type		PC Win7, Vista, XP
Video Input		DVI, HDMI
Connectors		Neutrik powerCON TRUE 1
MODULE FACE CHARACTERISTICS		
Curveable		No
Non Curveable		Yes
Mesh (see through)		No
Solid		Yes
Certification		TÜV, CE, FCC
* Additional sensor needed for Auto		

All specifications are correct at time of print, however they are liable to change and should be confirmed at point of order.



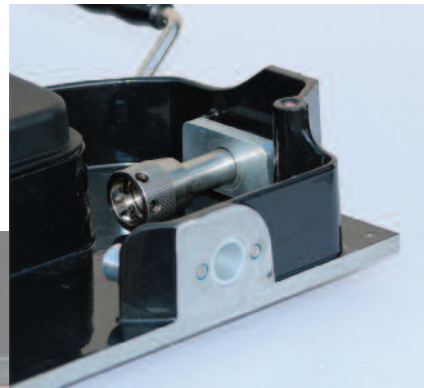
HRI3900

Versatile, robust and quick to install LED modules, with a reputation earned working with the biggest clients in the AV rental market. The HRI3900 is a product you can rely on from A list motor show events to A list music celebrities, HRI3900 is a screen you can count on.



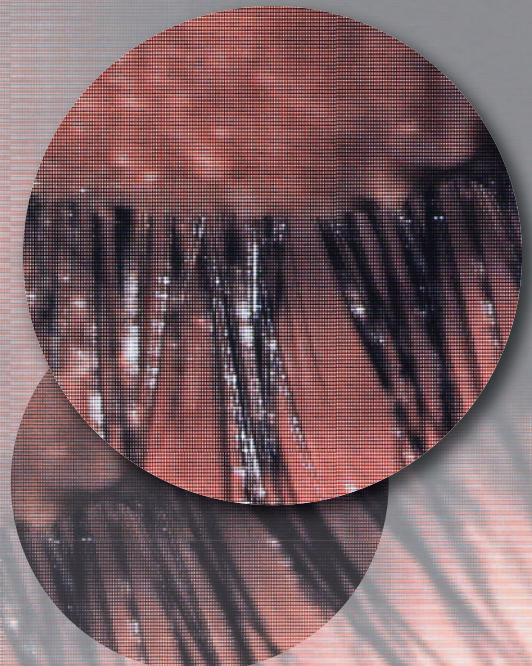
All you need for high resolution display applications

- Super bright at up to 1,200 nits
- Fast-rig
- Black face LEDs
- Low power consumption
- Minimal heat output
- Silent, fanless system
- Fully calibrated for true uniformity
- Ultra thin, lightweight module design
- High tolerances for seamless displays
- Magnetic LED tiles



Standard system accessories

- digiLED Navigator-NV screen interface
- digiPRO & PRO HD processors
- digiAD content management system
- Installation structures





MODULE SPECIFICATIONS - HRI3900

HRI 3.900		
LEDS		
LEDs Per Pixel		3
Red Wavelength (Dominant)	nm	620
Green Wavelength (Dominant)	nm	520
Blue Wavelength (Dominant)	nm	465
LED Manufacturer		Silan
LED Type		2020
PIXELS		
Pixel Configuration		3-in-1 SMD Black Body
LEDs Per Area	LED/m ²	196,613
Physical Pixel Pitch	mm	3.9062
Physical Pixel Resolution (Width)	pixels	128
Physical Pixel Resolution (Height)	pixels	128
Physical Pixel Resolution (Total)	pixels	16,384
Physical Pixels Per Area	pixels/m ²	65,538
MODULE		
Active Module Width	mm	500
Active Module Height	mm	500
Active Module Area	m ²	0.25
Module Depth	mm	96
Module Weight	kg	10.5
LED Tile Width	mm	250
LED Tile Height	mm	250
Viewing Angle - Horizontal	degrees	140
Viewing Angle - Vertical	degrees	120
Ingress Protection (Front)		IP40
Ingress Protection (Back)		IP40
Cabinet Material and Surface Finish		Aluminium
Storage Temperature Range	degree C	-20 to +50
Operating Temperature Range	degree C	0 to +50
Operating Humidity Range	%	10 to 95 Non-condensing
COLOUR		
Processing Depth	colours	16bit
Refresh Rate	Hz	1,900
BRIGHTNESS		
Brightness (Before Calibration)	nits	1,500
Brightness (After Calibration)	nits	1,200
Brightness Control		256 Levels, Auto/Manual
POWER		
Input Voltage	VAC	100/250
Input Power (Average)	watts	240/m ²
Input Power (Maximum)	watts	720/m ²
Brand of Power Supply		Meanwell
OTHER		
Lifespan	hours	100,000
Computer System Type		PC Win7, Vista, XP, NT, Win98
Video Input		DVI, HDMI
System Type		Nova Star
Pixel Calibration		Yes
Certification		CE, FCC, ETL

All specifications are correct at time of print, however they are liable to change and should be confirmed at point of order.



VHRI2770/3125/3570

When you need the best

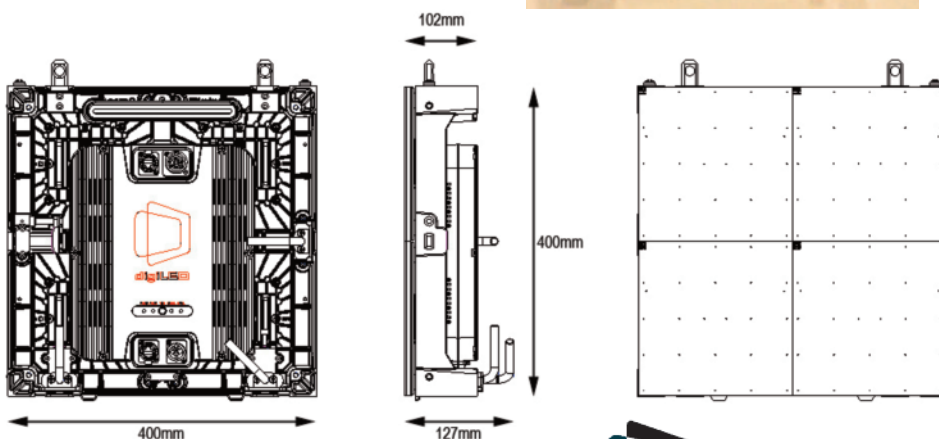
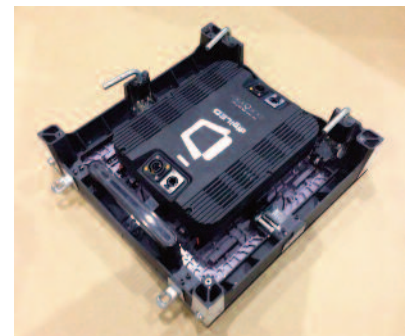
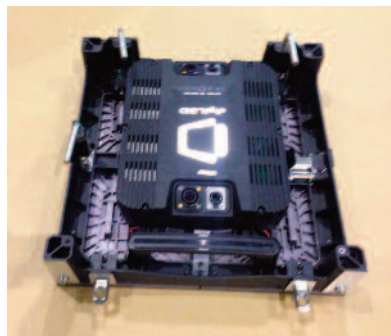
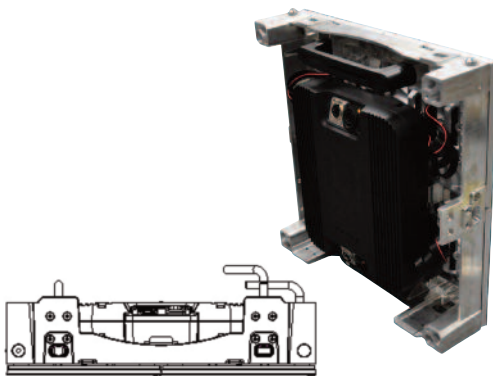
The digiLED HRI 2770, 3125 & 3570 series LED modules provide a high quality solution for hi-res LED applications. Offering outstanding usability for the rental market, HRI is quick to set-up, easy to use and the complete build requires no tools to create a smooth seamless screen. Maintenance couldn't be simpler with magnetic LED tiles and quick-swap power & data packs, meaning that any component can be changed in seconds. For the fixed installation market, HRI presents new options with the ability to mount the magnetic tiles on bespoke structures for front access, curving and creative solutions.

Standard system accessories

- digiLED Navigator-NV screen interface
- Flight cases
- digiPRO & PRO HD processors
- Hanging bars
- Stacking system

All you need for high resolution display applications

- 2.7mm, 3.1mm and 3.5mm pixel pitches
- On-board calibration
- Manufacturing tolerance to $\pm 0.05\text{mm}$ – seamless displays every time.
- Fast-rig 2 point connection, 1 person build and no tools required
- Magnetic tiles and quick-swap power & data packs for fast maintenance
- Lightweight modules for controllability during screen build (8.5kgs)
- Super bright at up to 2,000 nits (uncalibrated)
- Silent, fanless system
- Tiles, power & data packs can be used in front access, curving and creative applications



digiLED



MODULE SPECIFICATIONS - VHRI2770/3125/3570

		VHRI2770	VHRI3125	VHRI3570
LEDS				
LEDs Per Pixel		1R1G1B		
Red Wavelength (Dominant)	nm	620		
Green Wavelength (Dominant)	nm	520		
Blue Wavelength (Dominant)	nm	465		
LED Manufacturer				
LED Type		2121		
PIXELS				
Pixel Configuration		3 - in - 1 SMD		
LEDs Per Area	LED/m²	390,986	307,200	235,388
Physical Pixel Pitch	mm	2.77	3.125	3.57
Physical Pixel Resolution (Width)	pixels	144	128	112
Physical Pixel Resolution (Height)	pixels	144	128	112
Physical Pixel Resolution (Total)	pixels	20,736	16,384	12,544
Physical Pixels Per Area	pixels/m²	129,600	102,400	78,463
MODULE				
Active Module Width	mm	400		
Active Module Height	mm	400		
Active Module Area	m²	0.16		
Module Depth	mm	110	110	110
Module Weight	kg	8.5		
LED Tile Width	mm	200		
LED Tile Height	mm	200		
Viewing Angle - Horizontal	degrees	160	160	160
Viewing Angle - Vertical	degrees	140	140	140
Ingress Protection (Front)		IP40		
Ingress Protection (Back)		IP21		
Cabinet Material and Surface Finish		Die Cast Aluminium (Housing) Polycarbonate (LED Tile)		
LED Fixings		Magnetic		
Storage Temperature Range	degree C	-20 to +65		
Operating Temperature Range	degree C	-20 to +40		
Operating Humidity Range	%	10 to 90 Non-condensing		
COLOUR				
Processing Depth	colours	16bit		
Refresh Rate	Hz	2,000		
BRIGHTNESS				
Brightness (Before Calibration)		1,500		
Brightness (After Calibration)	nits	1,200		
Brightness Control		256 Levels, Auto/Manual		
POWER				
Input Voltage	VAC (Hz)	110/250 (50-60)		
Input Power (Average)	watts	TBC	35	35
Input Power (Maximum)	watts	TBC	105	105
Brand of power Supply		Meanwell		
OTHER				
Lifespan	hours	100,000		
Computer System Type		PC Win7, Vista, XP		
Video Input		DVI, HDMI		
Connectors		Neutrik PowerCON TRUE1		
Pixel Calibration		Yes (onboard LED tile)		

All specifications are correct at time of print, however they are liable to change and should be confirmed at point of order.



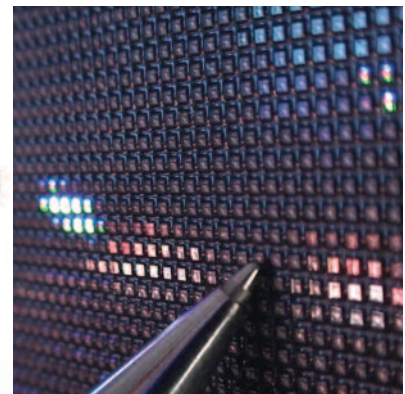
Ultra HRI 1.6/1.9/2.5

When you need the best

The digiLED Ultra HRI offers some of the tightest pixel pitches currently available in today's LED display market. These super hi-res displays result in viewing distances being shortened to just 1 metre and an off angle performance of up to 170° (without colour shift). Couple that with digiLED's legendary image reproduction, featuring 16 bit greyscale, refresh rates above 2,000Hz and high contrast ratios and the HRI is the clear choice for applications where detail is the name of the game.

All you need for high resolution display applications

- Super bright at up to 1,200 nits
- Low power consumption
- Minimal heat output
- Silent, fanless systems
- Fully calibrated for true uniformity
- Ultra thin, lightweight module design
- High tolerances for seamless displays
- Black face LEDs for enhanced contrast



Standard system accessories

- digiLED Navigator-NV screen interface
- digiPRO & PRO HD processors
- digiAD content management system
- Installation structures



MODULE SPECIFICATIONS - **Ultra HRI1.6/1.9/2.5**

		UHRI 1.6	UHRI 1.9	UHRI 2.5
LEDS				
LEDs Per Pixel			3	
Red Wavelength (Dominant)	nm		620	
Green Wavelength (Dominant)	nm		520	
Blue Wavelength (Dominant)	nm		465	
LED Manufacturer		Nationstar	Nationstar	Nationstar
LED Type		1010	1010	2020
PIXELS				
Pixel Configuration			3-in-1 SMD	
LEDs Per Area	LED/m ²	1,050,383	805,391	465,001
Physical Pixel Pitch	mm	1.69	1.93	2.54
Physical Pixel Resolution (Width)	pixels	192	168	128
Physical Pixel Resolution (Height)	pixels	216	189	144
Physical Pixel Resolution (Total)	pixels	41,534	31,846	18,387
Physical Pixels Per Area	pixels/m ²	350,128	268,464	155,000
MODULE				
Active Module Width	mm	325	325	325
Active Module Height	mm	365	365	365
Active Module Area	m ²	0.119	0.119	0.119
Module Depth	mm	110	110	110
Module Weight	kg	4.5	4.5	4.5
Viewing Angle - Horizontal	degrees	160	160	160
Viewing Angle - Vertical	degrees	160	160	160
Ingress Protection (Front)		IP32	IP32	IP32
Ingress Protection (Back)		IP21	IP21	IP21
Cabinet Material and Surface Finish			Aluminium Diecast	
Storage Temperature Range	degree C	-20 to +65	-20 to +65	-20 to +65
Operating Temperature Range	degree C	-10 to +40	-10 to +40	-10 to +40
Operating Humidity Range	%		10 to 90 Non-condensing	
COLOUR				
Processing Depth	colours		16bit	
Refresh Rate	Hz		1,900	
BRIGHTNESS				
Brightness (Before Calibration)	nits	1,200	1,200	1,200
Brightness (After Calibration)	nits	1,100	1,100	1,100
Brightness Control			Auto/Manual	
POWER				
Input Voltage	VAC (Hz)		100/250 (50-60)	
Input Power (Average)	watts	45	54	38
Input Power (Maximum)	watts	150	180	125
Brand of Power Supply			Meanwell	
OTHER				
Lifespan	hours		100,000	
Computer System Type			PC Win7, Vista, XP, NT, Win98	
Video Input			DVI, HDMI	
System Type				
Pixel Calibration			Yes	
Certification			CE, FCC, ETL (pending)	
All specifications are correct at time of print, however they are liable to change and should be confirmed at point of order.				

