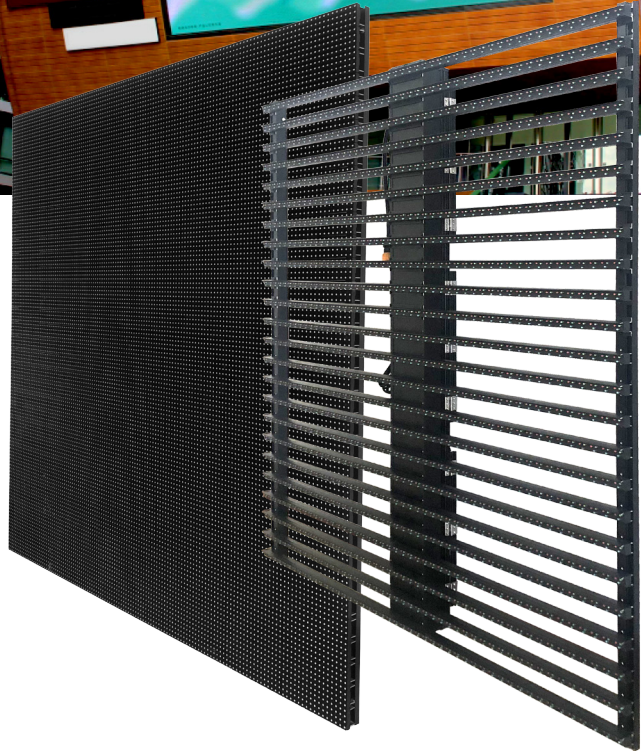
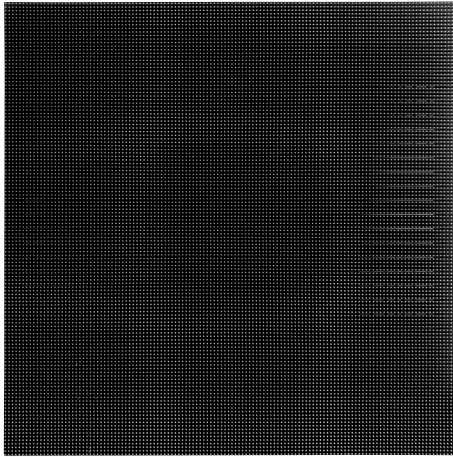


MIRAGE GT



TRANSPARENT & SOLID OUTDOOR PANELS
COST-EFFECTIVE
EASY TO SERVICE
HIGH BRIGHTNESS AND HIGHLY ENERGY EFFICIENT
WEATHERPROOF AT UP TO IP67

MIRAGE GT

FEATURES

Ultra slim & lightweight

MIRAGE GT combines an ultra slim design - only 25mm thick, or 124mm inclusive of the PDP, with a lightweight construction. Panel weights start from only 15kg per sqm.

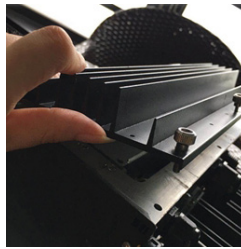
High brightness

MIRAGE GT boasts above average brightness levels of up to 7,000 nits.

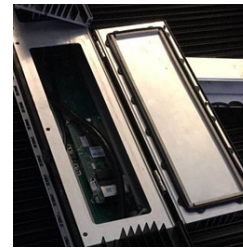
Corners

MIRAGE GT offers seamless, 90 degree corners, with no visible dark lines even from up close.

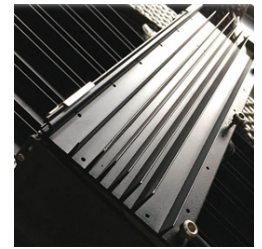
Modular PDP (Power & Data Pack) detail showing direct pin connection for fast and reliable connectivity.



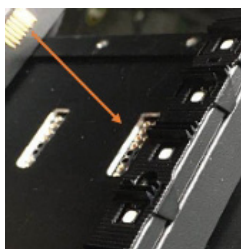
Remove the security screws for easy access to internals



Internal components easily accessible



Rear door of PDP has cooling fins for effective heat dissipation



Direct pin connections for reliable connectivity



LED Strips connect directly to PDP for efficient electrical connection

digiled Application Experts

- Site surveys, install design & visuals
- Procurement / installation of screen surface & structures
- System commissioning & ongoing maintenance / warranty

Easy installation & maintenance

Internal PDP components are removed via the front or rear of the screen and every component is easy to access and a fast swap.

Colour coded frames

With MIRAGE GT you can colour code the framework of your LED screen to match with any corporate branding/ colour schemes that may be present in your project. Using the standard RAL colour palette you can cross match your chosen colour. (Note: exact colour matches cannot be guaranteed).

Power to the ROI

As the price of LED screens fall, the costs of installation and running a system become a bigger percentage on the P&L. MIRAGE GT is a great performer and when you take the universal view, it's clear that it adds up.

Future proof

Our ethos is that calibration is not for the now, it's about future-proofing your LED screen's uniformity. We use the very best LEDs with tightly defined wavelengths, but as all LEDs age slightly differently, our calibration technology gives us the ability, in years to come, to bring your screen back to its beautiful best, quickly, efficiently and with little fuss.

Image quality

digiled's image quality is renowned in the LED screen industry, but ultimately this is just a function of component selection and processing path. The thing that you can be sure of is that we are using the highest quality single bin, single batch LEDs and MBI drivers to deliver legendary images and camera friendly performance with refresh rates 3840Hz.

MIRAGE GT

PRODUCT SPECIFICATIONS

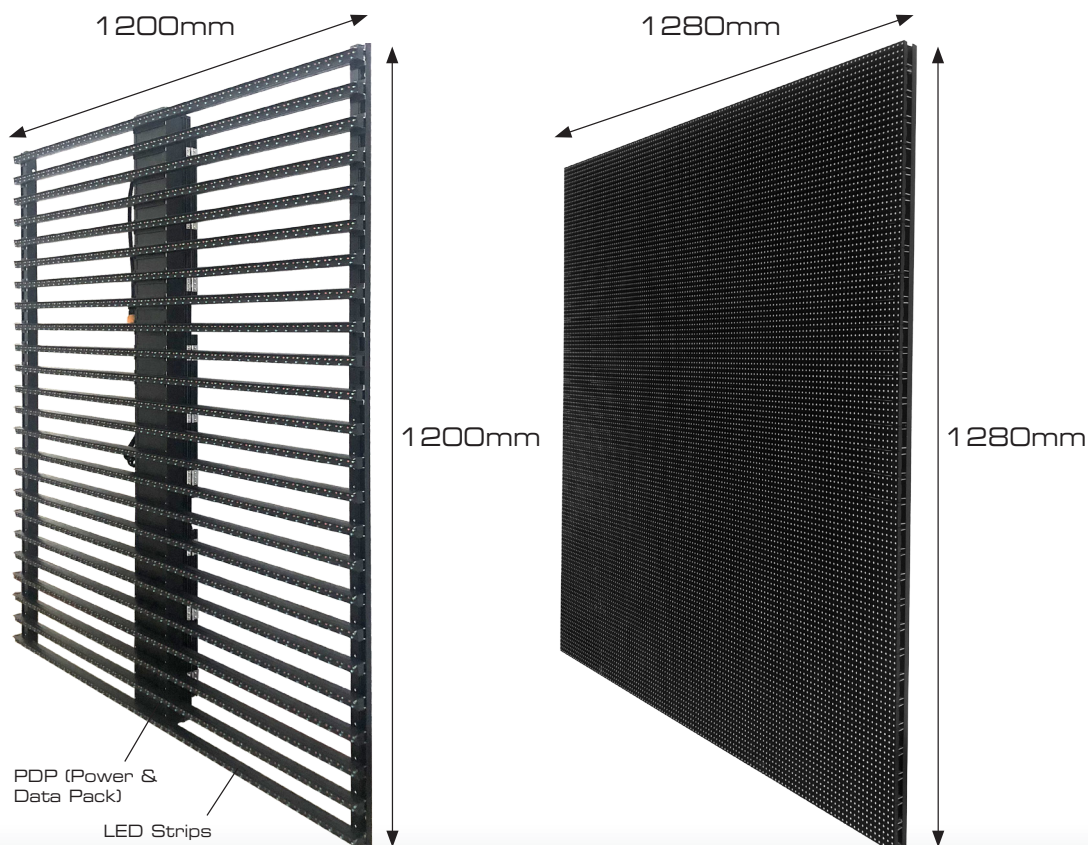
| | | GT10o | GT16o | GT16oDIP | GT25oDIP | GT32o | GT32oDIP | GT50oDIP |
|-------------------------------------|----------------|-------------------------------------|---------------|---------------|---------------|---------------|---------------|---------------|
| Physical Pixel Pitch (HxV) | mm | 10 | 16 | 16 | 25 | 16x32 | 16x32 | 25x50 |
| Pixel Resolution (Width/Height) | pixels/panel | 128/128 | 64/64 | 64/80 | 48/48 | 32/64 | 32/80 | 48/24 |
| Panel Dimensions | (W x H x D) mm | 1280x1280x130 | 1024x1024x130 | 1024x1280x130 | 1200x1200x130 | 1024x1024x130 | 1024x1280x130 | 1200x1200x130 |
| Standard Panel Area | m2 | 1.64 | 1.05 | 1.31 | 1.44 | 1.05 | 1.31 | 1.44 |
| Standard Weight | kg/m2 | 20 | 20 | 23 | 22 | 15 | 15 | 15 |
| Corner Option Available | degrees | Yes (90 degrees) | | | | | | |
| Transparency | % | 0 | 21 | 21 | 22 | 67 | 67 | 68 |
| Ingress Protection | (Front/Rear) | Outdoor IP66/IP66 | | | | | | |
| Maintenance Access | | Front or Rear | | | | | | |
| Standard Refresh Rate | Hz | ≥3,840 | | | | | | |
| Uncalibrated Brightness* | nits | ≥6000 | ≥7000 | ≥7500 | ≥6500 | ≥6000 | ≥6500 | ≥6000 |
| Calibrated Brightness* | nits | N/A | N/A | N/A | N/A | N/A | N/A | N/A |
| Input Voltage | VAC/Hz | 100~250/50-60 | | | | | | |
| Max Power Consumption** | W/sqm | 700 | 700 | 450 | 400 | 650 | 450 | 240 |
| Typical Working Power Consumption** | W/sqm | 210 | 210 | 135 | 120 | 195 | 135 | 72 |
| Operating Temperature (min/max) | degC | -20/+50 | -20/+50 | -20/+50 | -20/+50 | -20/+50 | -20/+50 | -20/+50 |
| Certification | | CE (IEC82368-1 TBC), ETL, EMC, RoHS | | | | | | |
| HDR*** | | (see foot note) | | | | | | |

All specifications are subject to change without prior notification. E&OE. Specifications are for standard system configuration. Contact your digiLED expert for detailed specification.

*The figures shown for brightness are standard guidelines figures only and based on average test laboratory conditions.

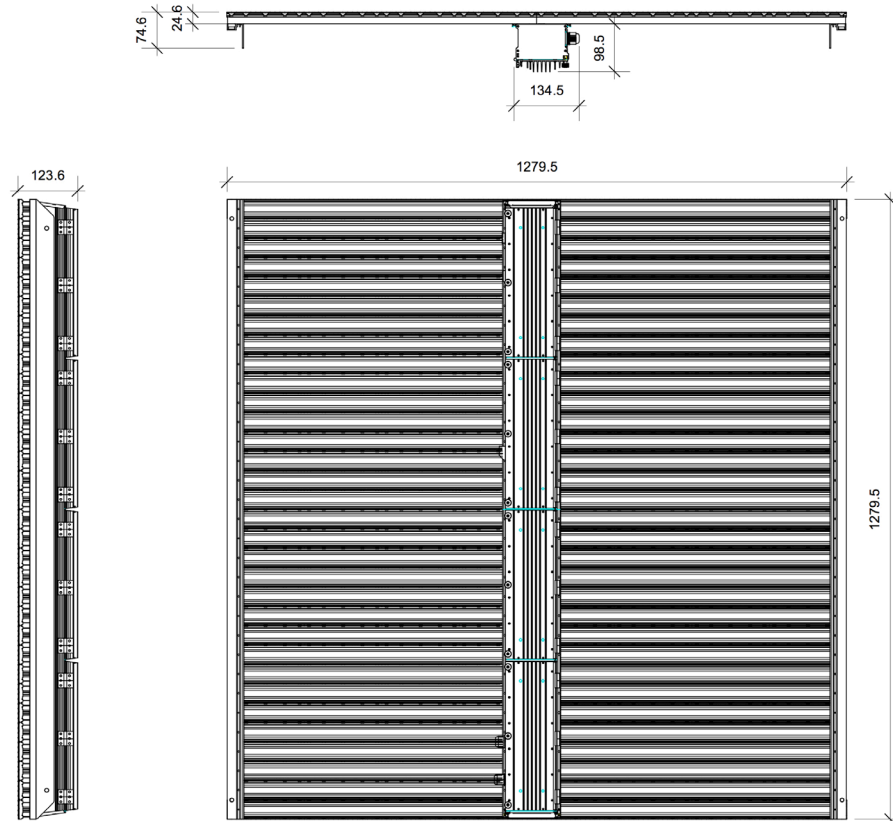
** The figures shown for power consumption are standard guidelines figures only and based on average test laboratory conditions.

***HDR: Subject to system configuration and processing.



MIRAGE GT

PRODUCT DIMENSIONS & APPLICATIONS



APPLICATIONS

Retail • Corporate • Venues • Arenas • Building Wraps

