

# MIRAGE SL

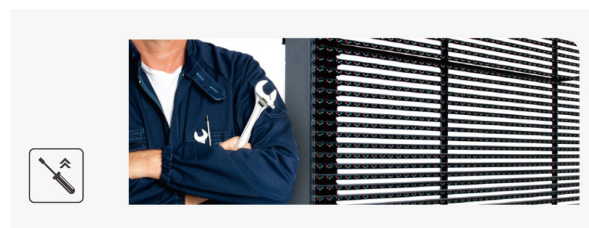


OUTDOOR MESH LED DISPLAY PANELS  
SUPER HIGH BRIGHTNESS  
PERFECT FOR BUILDING WRAPS & LARGE-SCALE  
INSTALLATIONS  
HIGH RELIABILITY, CONVENIENT MAINTENANCE AND  
LEGENDARY DIGILED IMAGE QUALITY  
HIGH END NICHIA DIP LEDS

## MIRAGE SL FEATURES

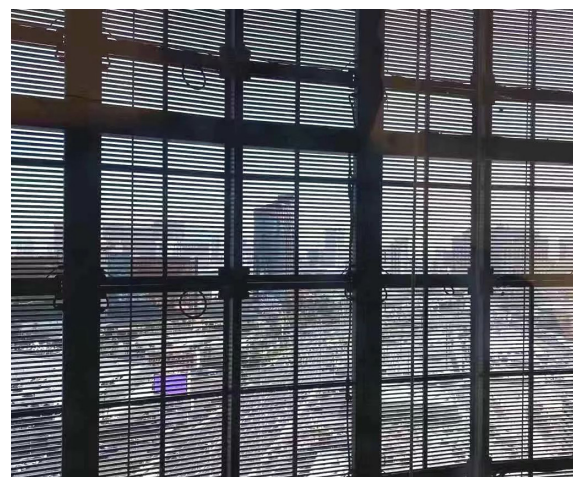
### Easy and quick installation

Robust construction with well designed and placed fixing points make any installation quick, convenient and easy, saving time and expense. With no need for elaborate support structures, MIRAGE SL will install more cost-effectively than traditional LED screens and deliver brilliant images.



### Transparency

With 65% transparency, MIRAGE SL is suitable for any location where a degree of translucency is needed. Typically building wraps, sensitive environmental locations and positions where external light is still needed inside a room.

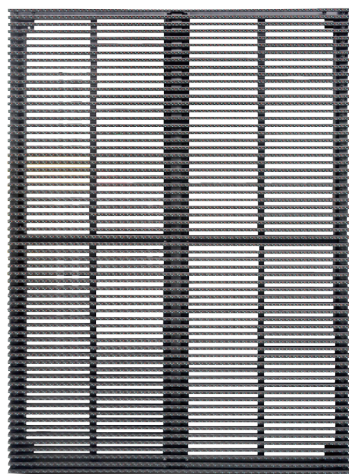


### Integral frame

MIRAGE SL offers panel weights in the region of 20kg per sqm, reducing supporting structure costs and dead mass weights on any mountings and fixings.

## digiLED Application Experts

- Site surveys, install design & visuals
- Procurement / installation of screen surface & structures
- System commissioning & ongoing maintenance / warranty

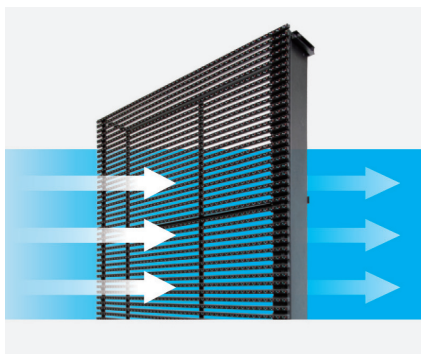


### Low wind resistance

With 65% transparency, MIRAGE SL allows a lower wind resistance of up to 35% so any mounting in wind prone areas is ideal as an alternative to solid panel solutions.

### Nichia LEDs

MIRAGE SL uses high end Nichia 336 DIP gold thread LEDs. These extremely efficient LEDs take the performance of transparent screens to a whole new level: Ultra low power consumption, super high brightness of up to 8,000 nits and a slower brightness decay over time. You can expect your display to have a much longer lifespan, which means your investment is a lot safer.



### Easier maintenance

With the ability to be serviced from the front or the rear of the cabinet, Mirage SL is ideal in situations where components need to be swapped quickly and efficiently.

# MIRAGE SL

## PRODUCT SPECIFICATIONS

		MIRAGE SL25o	MIRAGE SL31o	MIRAGE SL50o
Physical Pixel Pitch (HxV) mm		25	31.25	50
Pixel Resolution (Width/Height)	pixels/panel	48/64	48/32	32/24
Panel Dimensions	(W x H x D) mm	1200 x 1600 x 130	1500 x 1000 x 130	1600 x 1200 x 130
Standard Panel Area	m2	1.92	1.5	1.92
Standard Weight	kg/m2	20		
Ingress Protection	(Front/Rear)	Outdoor IP65/IP65		
Transparency	%	50	55	70
Maintenance Access		Front or Rear		
Standard Refresh Rate	Hz	≥3,840 (TBC)		
Uncalibrated Brightness*	nits	≥8000	≥8000	≥8000
Calibrated Brightness*	nits	N/A	N/A	N/A
Input Voltage	VAC/Hz	100~250/50-60		
Max Power Consumption**	W/sqm	362	250	200
Typical Working Power Consumption**	W/sqm	109	75	60
Operating Temperature (min/max)	degC	-20/+50		
Certification		(CE (IEC82368-1 TBC), EMC, LVD, RoHS):TBC, UL, FCC,		
HDR***		(see foot note)		

All specifications are subject to change without prior notification. E&OE.

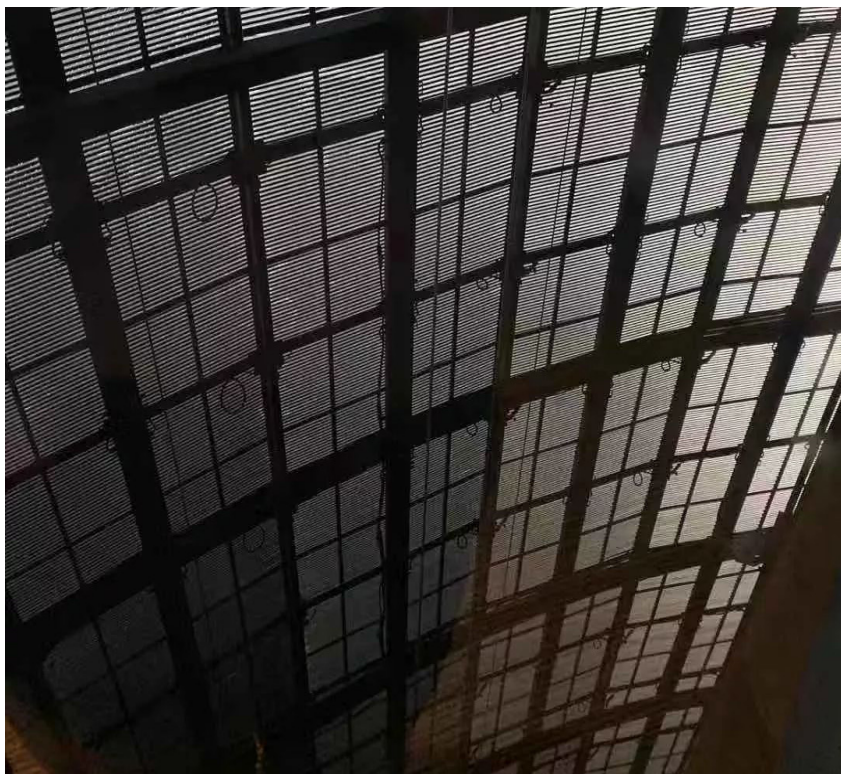
Specifications are for standard system configuration. Contact your digiLED expert for detailed specification.

\*The figures shown for brightness are standard guidelines figures only and based on average test laboratory conditions.

\*\* The figures shown for power consumption are standard guidelines figures only and based on average test laboratory conditions.

\*\*\*HDR: Subject to system configuration and processing.





## APPLICATIONS

Retail • Corporate • Venues • Arenas • Building Wraps

