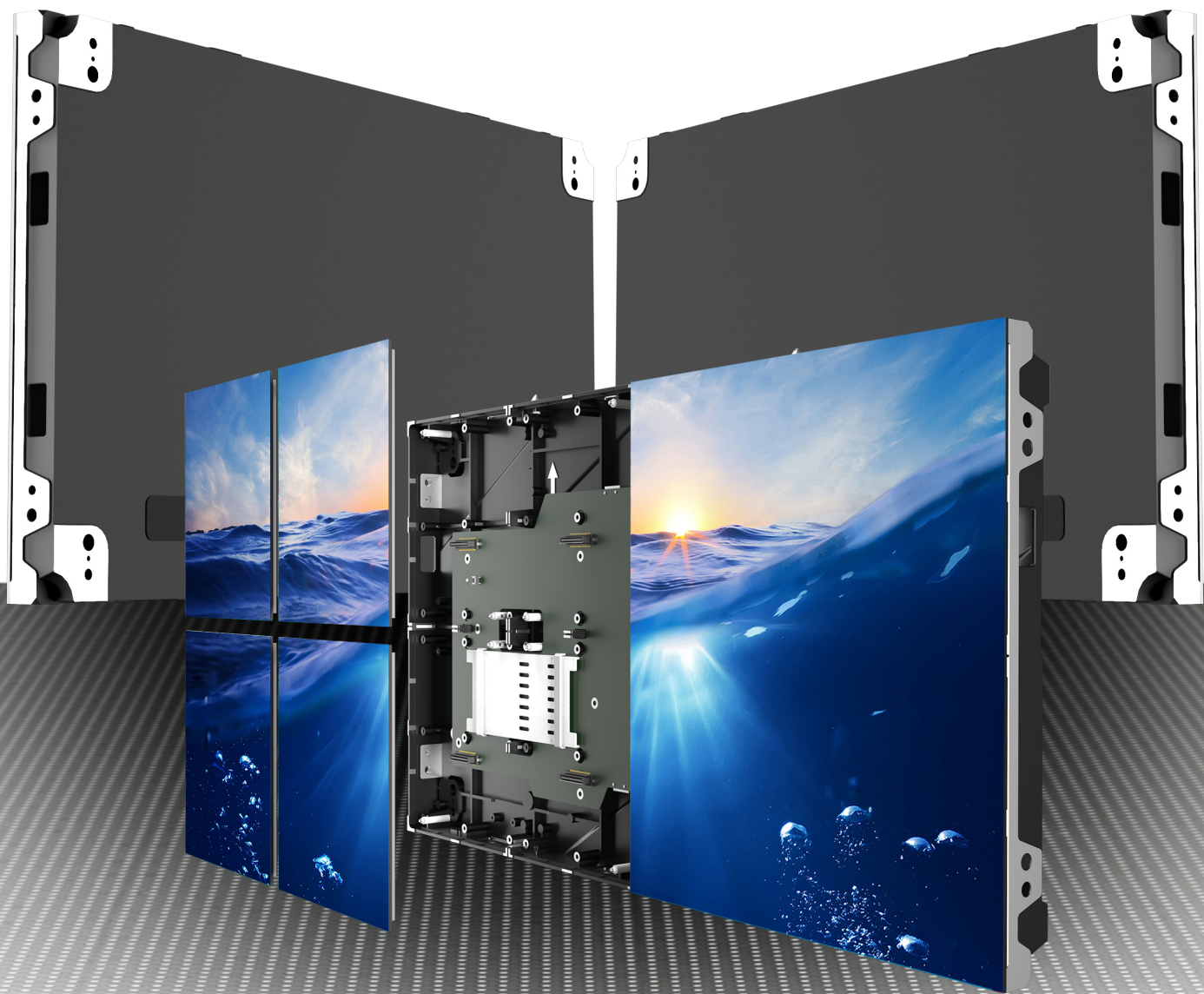


NANO COB

CHIP ON-BOARD LEDs & ULTRA FINE PIXEL PITCH LED PANELS



Amazing Brightness

With up to 1,200 nits, NANO COB delivers unprecedented brightness levels at these pixel pitches.

Ultra Fine Pixel Pitch

Pixel pitches down to 0.9mm, allowing you to create high resolution, 4K screens starting from much smaller screen dimensions.

Chip On Board (COB)

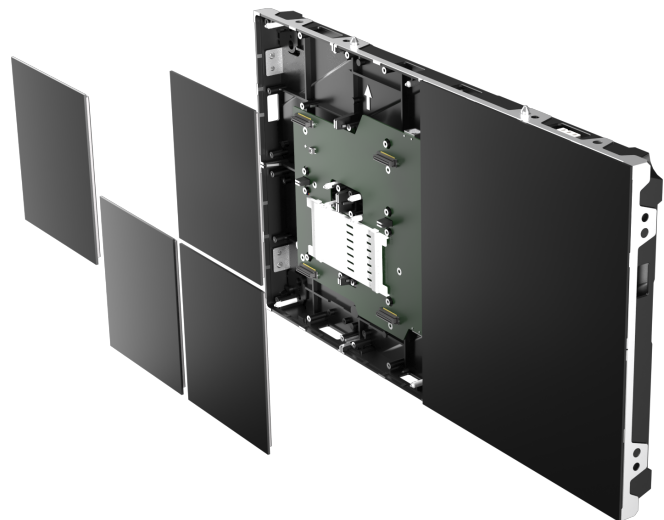
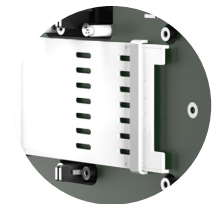
A more robust LED technology than SMD, regardless of the pixel pitch. This is the perfect product for customer facing applications demanding a tougher screen surface, as the encapsulated LEDs are hard to damage.

Super Low Power Consumption

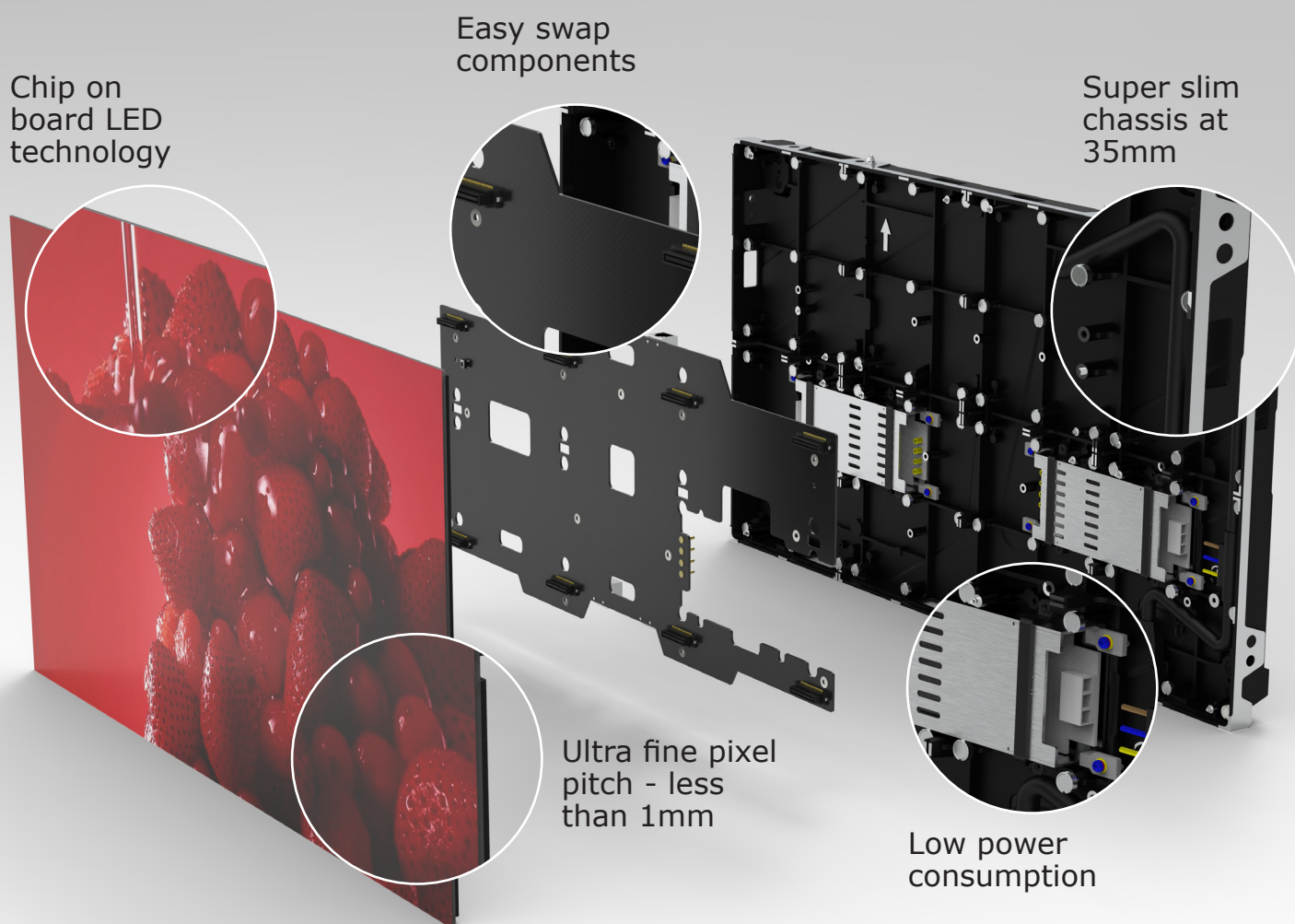
Our COB technology brings significant power savings to LED displays, with 30% less power needed on average compared to SMD technology at a given brightness level...

2 Year Warranty

NANO COB comes with a standard 2 year warranty. Contact your local Service Lab via online RMA for our renowned fast turnaround.



FEATURES

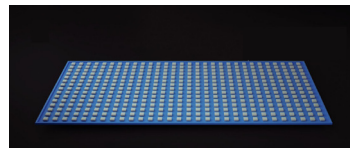


COB LEDs versus SMD LEDs

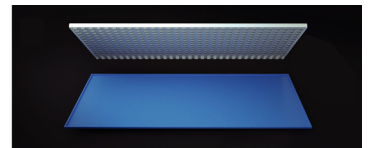
COB PCB Construction

The manufacture of COB PCBs has many differences over regular SMD construction, as follows:

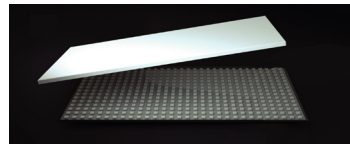
- The COB LED chips are bonded, not soldered to the PCB.
- The COB LED chips can withstand knocks and aggressive cleaning.
- The COB LED chips can be placed nearer to neighbouring chips without risk of short circuiting.
- The COB LED chips have improved contrast ratios, viewing angles and blacks.
- The COB LED chips have an improved failure rate



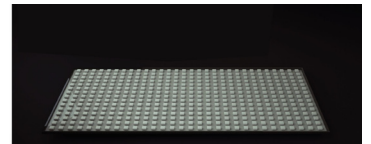
Bonded LED COB chips to PCB



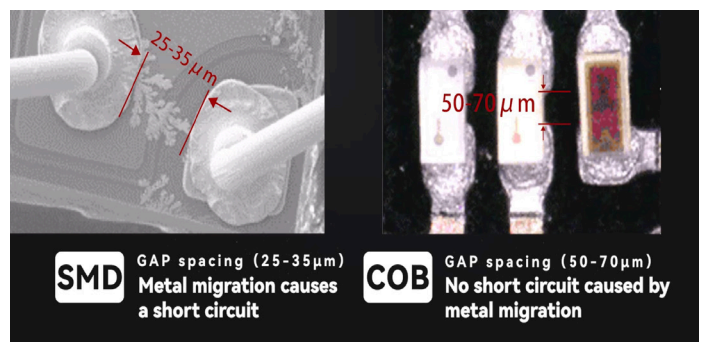
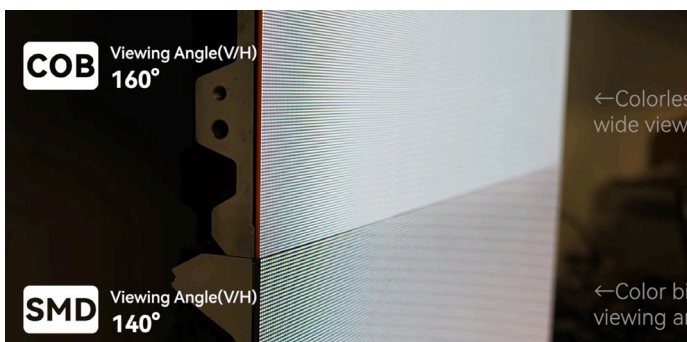
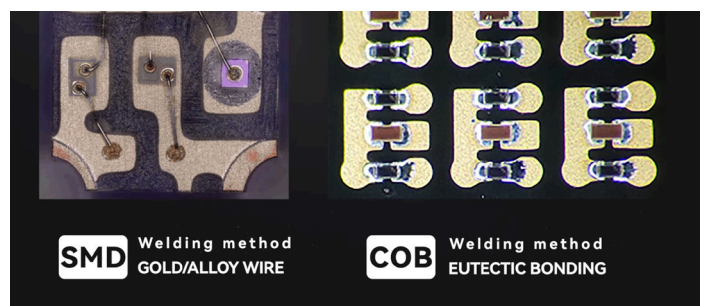
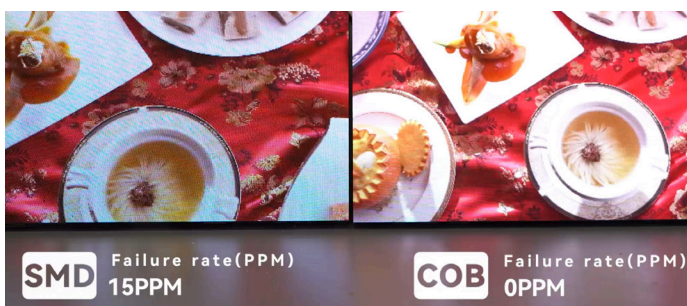
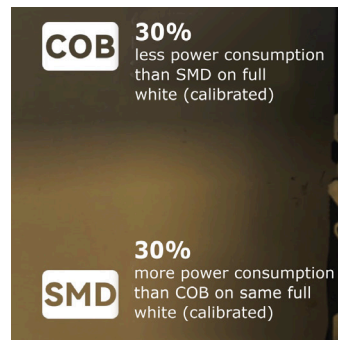
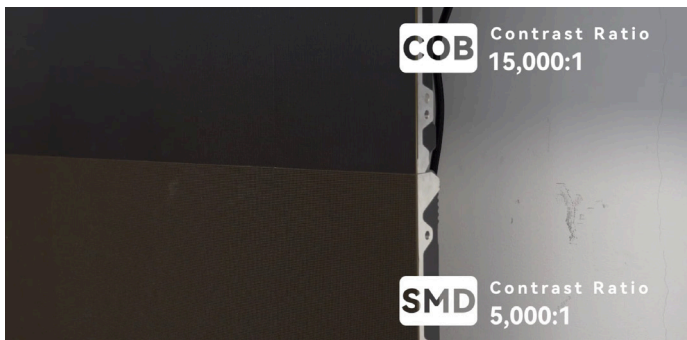
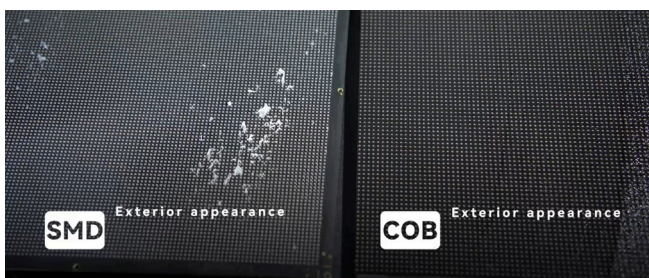
Mask is bonded to PCB revealing the COB chips through apertures in the mask



Mask overlays the precision bonded COB chips



Finished LED COB bonded PCB



SPECIFICATIONS

| INDOOR | | NANO COB 0940 | NANO COB 1250 | NANO COB 1560 | NANO COB 1880 |
|-------------------------------------|-------------------|--|--------------------|---------------------|---------------------|
| Physical Pixel Pitch (HxV) mm | | 0.9375 | 1.25 | 1.5625 | 1.875 |
| LED Type | SMD or COB | COB | | | |
| Pixel Resolution (Width/Height) | pixels/panel | 640 x 360 | 480 x 270 | 384 x 216 | 320 x 180 |
| LED Tile Dimensions | (W x H x D) mm | 150 x 168.75 x 2.28 | 150 x 168.75 x 2.2 | 150 x 168.75 x 2.18 | 150 x 168.75 x 2.15 |
| Panel Dimensions | (W x H x D) mm | 600 x 337.5 x 35 | 600 x 337.5 x 35 | 600 x 337.5 x 35 | 600 x 337.5 x 33 |
| Standard Panel Area | m ² | 0.2025 | 0.2025 | 0.2025 | 0.2025 |
| Standard Weight | kg/m ² | 22.72 | 22.72 | 22.72 | 22.72 |
| Ingress Protection | (Front/Rear) | IP65/IP30 | | | |
| Maintenance Access | | Front | | | |
| Standard Refresh Rate | Hz | ≥3840 | | | |
| Frame Rate | Hz | 60 | | | |
| Uncalibrated Brightness* | nits | ≥1300 | ≥800 | ≥950 | ≥850 |
| Calibrated Brightness* | nits | ≥1000 | ≥550 | ≥600 | ≥600 |
| Input Voltage | VAC/Hz | 100~250 50/60 | | | |
| Max Power Consumption** | W/sqm | 514 | 464 | 336 | 286 |
| Typical Working Power Consumption** | W/sqm | 154 | 139 | 101 | 86 |
| Operating Temperature (min/max) | degC | -10/+40] | | | |
| Certification*** | | UK CA (NI), CE, FCC, ETL, LVD, EMC, RoHS, UL | | | |
| HDR**** | | (see foot note) | | | |

All specifications are subject to change without prior notification. E&OE.

Specifications are for standard system configuration. Contact your digiLED expert for detailed specification.

*The figures shown for brightness are standard guideline figures only and based on average test laboratory conditions.

** The figures shown for power consumption are standard guideline figures only and based on average test laboratory conditions at calibrated brightness.

*** CE comes with IEC (EN) 62368-1.

****HDR: Subject to system configuration and processing.

NANO COB Panel Diagonal Dimensions



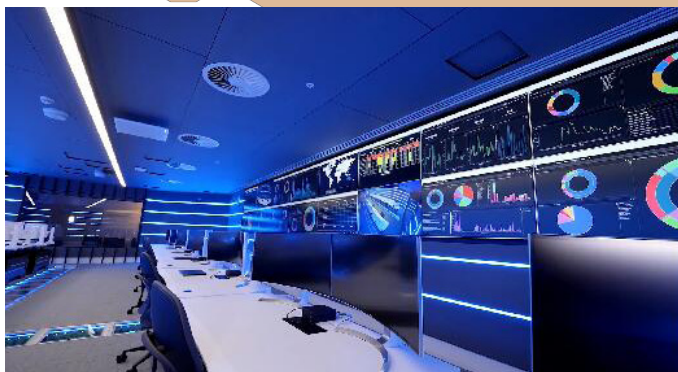
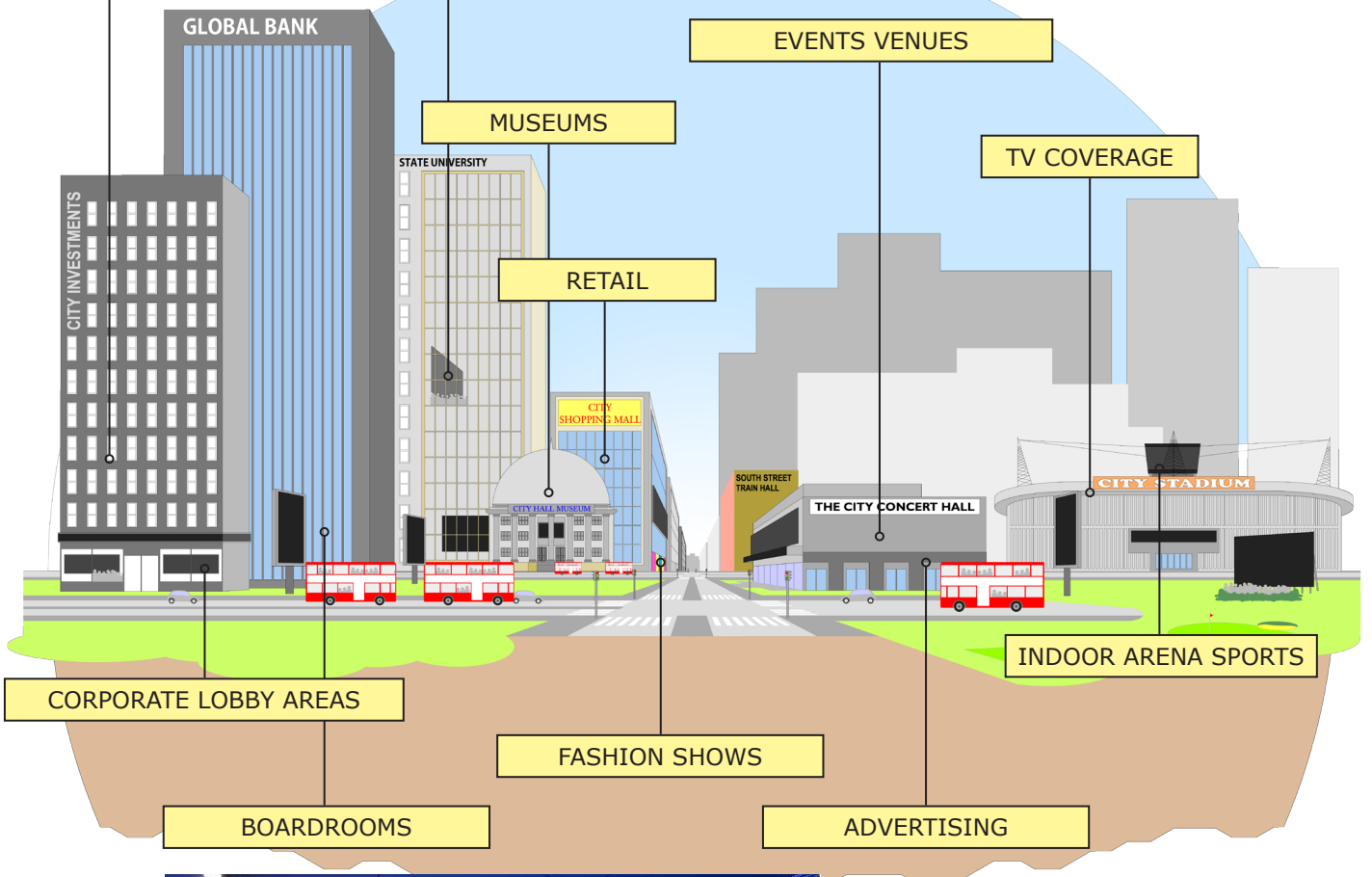
INDOOR APPLICATION EXAMPLES



EDUCATION
LECTURE THEATRE



EXPOS



Our Ethos

Our goal is to do business with suppliers and customers whose company we enjoy and whose principles and values we respect.

We endeavour to be politely firm in our beliefs and steadfastly uphold our standards by doing the job correctly to produce quality products, supplied with loving care, to customers who cherish our systems and the enthusiastic, friendly expertise we strive to provide.

We love our work and are proud of our experience and our expertise. We want to do business with people who see the benefits of what we do and appreciate our input.

digiLEDers are keen to offer advice and an insight into our specialist knowledge without demanding a commercial return, if we can't convince customers of our value, we don't deserve their patronage.

Our Products

Huge, bright, vibrant, bespoke, digiLED screens are designed by seasoned LED experts, then crafted and assembled in selected, specialist factories.

Assembly, production and testing is monitored by the industry's leading QC team, using a proven 228-step manufacturing QC process paying meticulous attention to fine detail.

The resulting digiLED screens exhibit superior images, provide reliable performance and extended life. Supported locally by experienced, qualified, field and bench engineers. **digiLED quality just lasts.**

CONTACT US

LONDON

UK HEAD OFFICE

The Pixel Depot, Copse Farm, Moorhurst Lane, Beare Green, Surrey RH5 4LJ UK

tel: +44 20 7381 7840 e-mail: info@digiLED.com



Sales



Admin



Pixel Depot



Tech Hub



Service Lab

LAS VEGAS

The Pixel Depot, 365 Pilot Road, Suite A, Las Vegas, Nevada, 89119, USA

tel: +44 20 7381 7840 e-mail: info@digiLED.com



Sales



Admin



Pixel Depot



Tech Hub



Service Lab

DALLAS

digiLED Service Lab, 8291 Gateway Dr, Argyle, TX 76226, USA



Service Lab

SHENZHEN

SHENZHEN DIGI TECHNOLOGY CO. LTD,

The Pixel Depot, Room 1807, Haohai Junyue Bldg, 2092 Shenyan Road, Hai Shan Street, Yantian District, Shenzhen 518000, China



Tech Hub



Logistics



Service Lab

SALES OFFICES IN MILAN, THE HAGUE, NANTES AND TOKYO

TALK TO US AND BE SOCIAL

+44 20 7381 7840 info@digiLED.com www.digiLED.com



[digiLED_](#)



[digiLEDscreens](#)



[digiLEDscreens](#)



[digiLED_](#)