

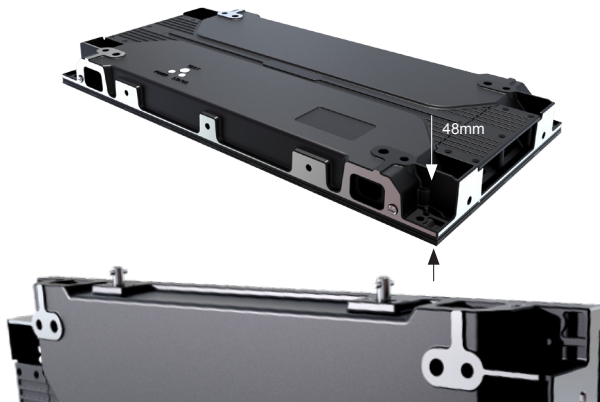
# digiTHIN XS SERIES



SUPER SLIM  
HIGH DEFINITION  
MIX & MATCH PANEL SIZES  
DIRECT TO WALL MOUNTING  
FULL HD RESOLUTION  
6 PANEL SIZES AVAILABLE

### SUPER SLIM

The overall panel depth is a mere 48mm and the panels are super lightweight at under 25kgs/sqM.



### Frameless installation

The digiTHIN XS series has the ability to be mounted directly to the wall, allowing your installation to be completely frameless.

### HIDDEN CABLING

Top, bottom and side apertures allow cabling to be hidden within the chassis for a minimalist look to the finished screen.

### FAST LOCK DESIGN

Auto locks on the top of the panels provide fast and accurate panel to panel locking, creating seamless continuity of the screen surface.

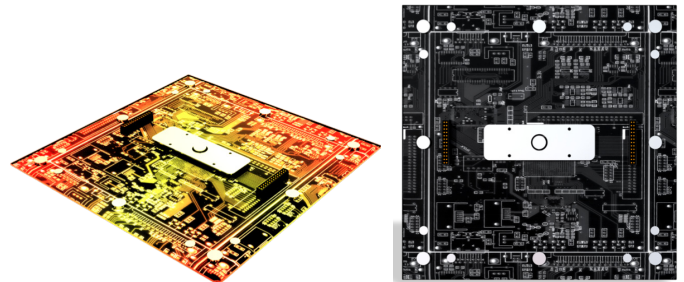
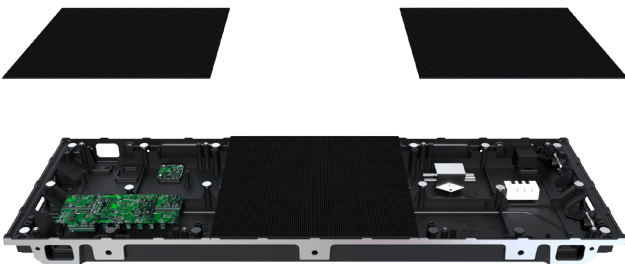


## digiLED Application Experts

- Site surveys, install design & visuals
- Procurement / installation of screen surface & structures
- System commissioning & ongoing maintenance / warranty

### FRONT ACCESS

With magnetic LED tiles that fit the chassis fixing points, the user friendly design allows fast and efficient maintenance and the quick replacement of internal components.

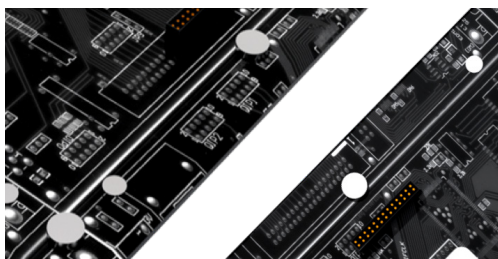
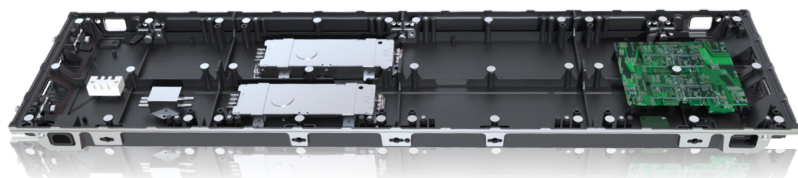


### ULTRA THIN & COOL RUNNING

Convenient for maintenance. Superb heat dissipation adding to efficient power consumption.

### REDUNDANCY/BACK UP

2 PSUs on-board, for back up, if, on the rare occasion the power goes down (optional). 2 Receiving cards are also on-board should a failure occur (optional). Both automatically kick in to provide seamless continuity.

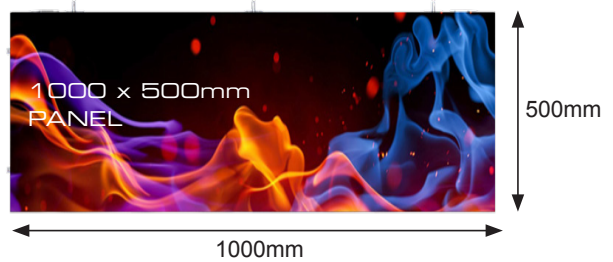
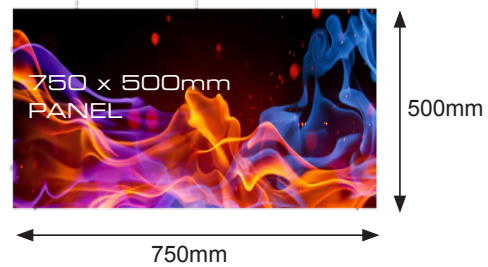
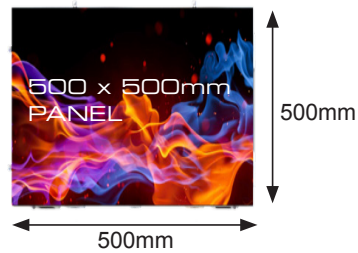
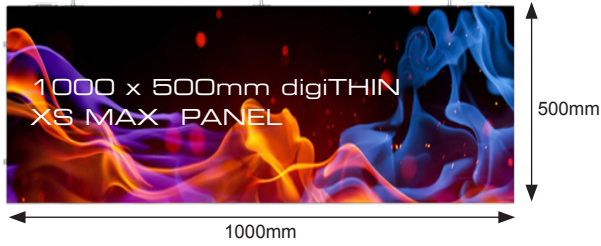


### SMART MODULES

On-board calibration with smart module functionality.

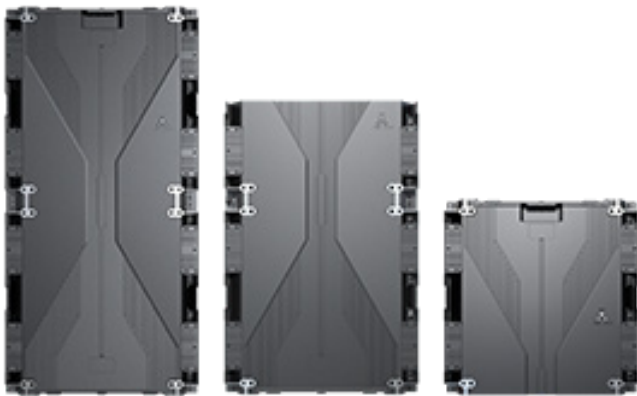


### STANDARD PANEL SIZE



### 3 OPTIONS OF PANEL SIZES

Based on 250mm x 250mm LED tiles the XS MAX offers 3 panel sizes



### Mix & match

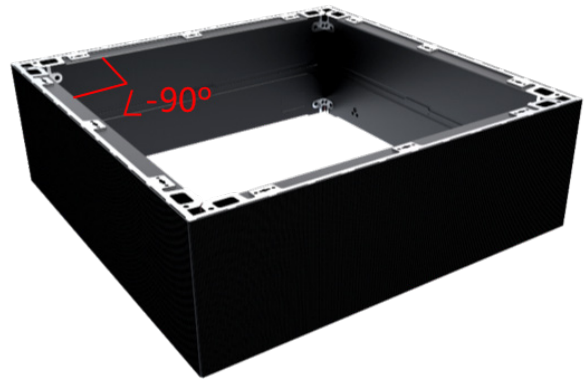
When it comes to designing a bespoke screen layout, any combination of panels can be used in the same array.

### Economy of scale

XS MAX offers larger panel sizes, meaning you can reduce the cost of your large scale screen installations, whilst achieving specific sizes due to its compatibility with the smaller XS panels.

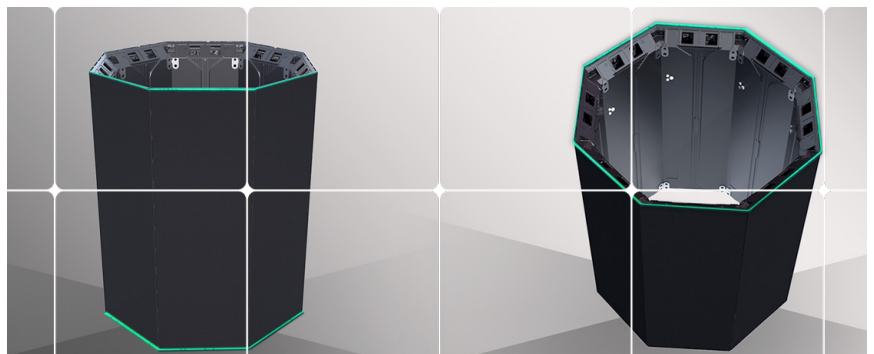
### Corner to corner

Cabinets can be arranged to provide a virtually seamless corner.



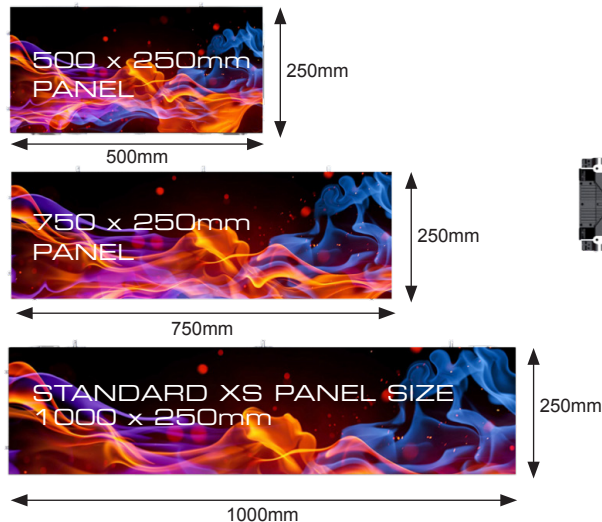
### Curving

Convex and concave curving can be achieved between 5 and 10 degrees between panels without bright lines showing between panels.



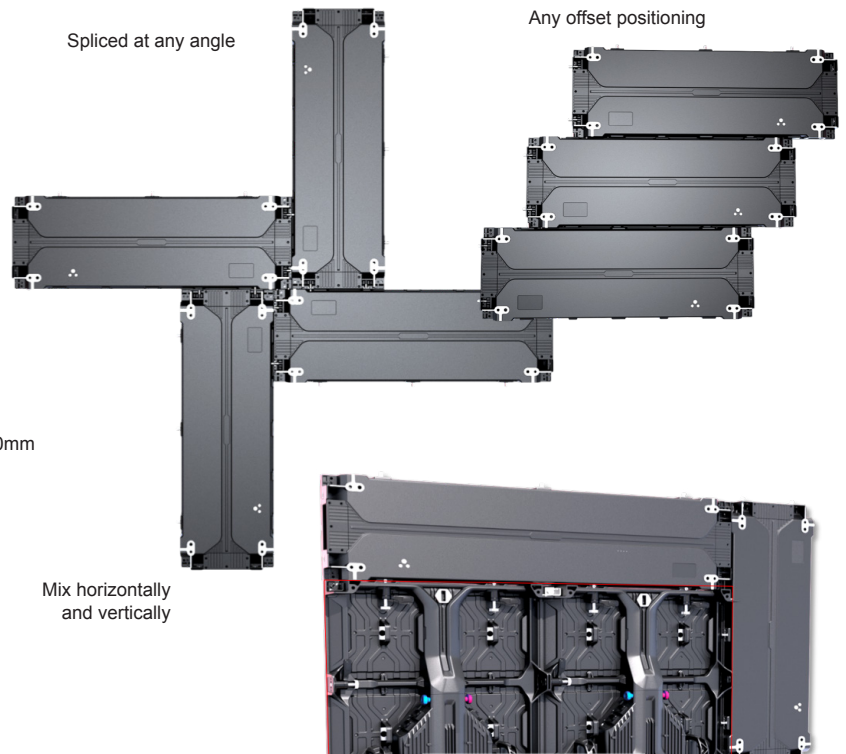
### 3 OPTIONAL PANEL SIZES

Based on 250mm x 250mm LED tiles the XS offers 3 panel sizes



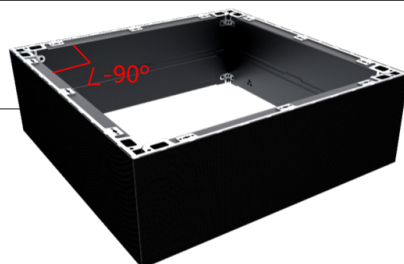
### MIX & MATCH

When it comes to designing a bespoke screen layout, any combination of panels can be used in the same array.



### CORNER TO CORNER

Cabinets can be arranged to provide a virtually seamless corner



### CURVING

Convex and concave curving can be achieved between 5 and 10 degrees between panels without bright lines showing between panels.



### In control 24/7

It's not as though you won't know how your screen is performing - with sophisticated monitoring options, any issues that arise can be dealt with swiftly and effectively, increasing up-time and ensuring your return on investment.

### Image quality

digiLED's image quality is renowned in the LED screen industry, but ultimately this is just a function of component selection and processing path. The thing that you can be sure of is that we're using the highest quality single bin, single batch LEDs and MBI drivers to deliver legendary images and camera friendly performance with refresh rates >1,920Hz.

### Future proof

To further enhance visual acuity, our ethos is that calibration is not for the now, it's about future-proofing your LED screen's uniformity. We use the very best LEDs with tightly defined wavelengths, but as all LEDs age slightly differently, our calibration technology gives us the ability, in years to come, to bring your screen back to its beautiful best, quickly, efficiently and with little fuss.

### Power to the ROI

As the price of LED screens fall, the costs of installation and running a system become a bigger percentage on the P&L.

digiLED XS is a great performer, with low installation costs and time saving maintenance.

# digiTHIN XS MAX

## PRODUCT SPECIFICATIONS

		XS MAX1560	XS MAX1950	XS MAX2500	XS MAX2600	XS MAX2980	XS MAX3910
Physical Pixel Pitch (HxV) mm		1.563	1.953	2.500	2.604	2.976	3.906
Pixel Resolution (Width/Height)	pixels/panel	320/640	256/256	200/400	192/192	168/168	128/128
Panel Dimensions	(W x H x D) mm	500 x 1000 x 48					
Optional Panel Sizes	(W x H) x D mm	(500 x 500, 500 x 750, 500 x 1000) x 48					
Option To Rotate Panel		No					
Standard Panel Area	m <sup>2</sup>	0.5					
Standard Weight	kg/m <sup>2</sup>	25					
Ingress Protection	(Front/Rear)	Indoor IP40/IP21					
Maintenance Access		All Front					
Standard Refresh Rate	Hz	≥3840	≥3360	≥3840	≥3360	≥3840	≥3840
Uncalibrated Brightness*	nits	≥700	≥800	≥1000	≥1000	≥1000	≥1000
Calibrated Brightness*	nits	≥600	≥700	≥900	≥900	≥900	≥900
Input Voltage	VAC/Hz	100~240/50-60					
Max Power Consumption**	W/sqm	384	438	357	478	420	438
Typical Working Power Consumption**	W/sqm	115	131	107	143	126	131
Operating Temperature (min/max)	degC	0/+40					
Certification		CE (IEC82368-1 TBC), FCC, ETL, EMC, LVD, RoHS					
HDR***		(see foot note)					

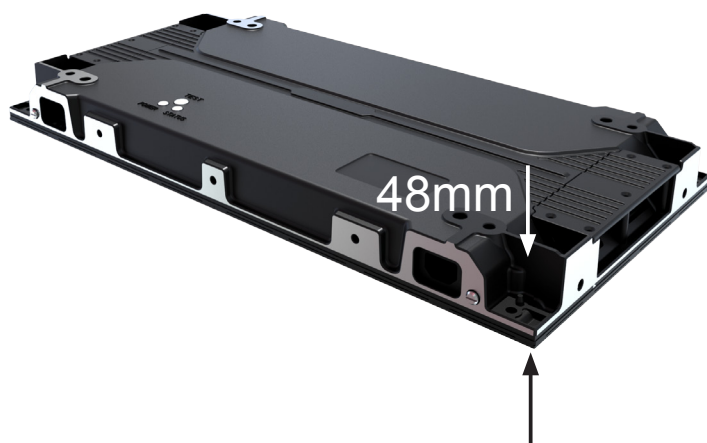
All specifications are subject to change without prior notification. E&OE.

Specifications are for standard system configuration. Contact your digiLED expert for detailed specification.

\*The figures shown for brightness are standard guidelines figures only and based on average test laboratory conditions.

\*\* The figures shown for power consumption are standard guidelines figures only and based on average test laboratory conditions.

\*\*\*HDR: Subject to system configuration and processing.



# digITHIN XS

## PRODUCT SPECIFICATIONS

		digITHIN XS1560	digITHIN XS1950	digITHIN XS2500	digITHIN XS2600	digITHIN XS2980	digITHIN XS3910
Physical Pixel Pitch (HxV) mm		1.563	1.953	2.500	2.604	2.976	3.906
Pixel Resolution (Width/Height)	pixels/panel	640/160	512/128	400/100	384/96	336/84	256/64
Panel Dimensions	(W x H x D) mm	1000 x 250 x 48					
Optional Panel Sizes	(W x H) x D mm	(500 x 250, 750 x 250) x 48					
Option To Rotate Panel		Yes (90 deg)					
Standard Panel Area	m2	0.125					
Standard Weight	kg/m2	29.6					
Ingress Protection	(Front/Rear)	Indoor IP40/IP21					
Maintenance Access		All Front					
Standard Refresh Rate	Hz	≥3840	≥3360	≥3840	≥3360	≥3840	≥3840
Uncalibrated Brightness*	nits	≥700	≥800	≥1000	≥1000	≥1000	≥1000
Calibrated Brightness*	nits	≥600	≥700	≥900	≥900	≥900	≥900
Input Voltage	VAC/Hz	100~250/50-60					
Max Power Consumption**	W/sqm	384	438	357	478	420	438
Typical Working Power Consumption**	W/sqm	115	131	107	143	126	131
Operating Temperature (min/max)	degC	0/+40					
Certification		CE (IEC82368-1 TBC), FCC, ETL, EMC, LVD, RoHS					
HDR***		(see foot note)					

All specifications are subject to change without prior notification. E&OE.

Specifications are for standard system configuration. Contact your digiLED expert for detailed specification.

\*The figures shown for brightness are standard guidelines figures only and based on average test laboratory conditions.

\*\* The figures shown for power consumption are standard guidelines figures only and based on average test laboratory conditions.

\*\*\*HDR: Subject to system configuration and processing.







## APPLICATIONS

Venues • Stadiums • Corporate Offices • Transportation Hubs • Retail •  
Anywhere you want to make a creative impact!

