



FINE-PITCH, HIGH BRIGHTNESS,  
OUTDOOR LED

digITHIN X

A large, angled LED display panel is shown in the center of the image, displaying the 'digITHIN X' logo. The panel is tilted upwards and to the right. The background is a dark, rainy scene with many vertical streaks of rain falling. The display panel is illuminated, and the rain is visible on its surface. The overall scene conveys the product's outdoor and weather-resistant capabilities.



## Designed for Close Up, Outdoor & High Brightness Applications

digiTHIN X has been designed to bring indoor fine pitch resolutions to great outdoors. Building on our well know digiTHIN platform, it is easy to install and offers exceptional reliability and image quality.

## Familiar Shape, Size & Aspect Ratio

Using the same 16:9 aspect ratio as other displays within the digiTHIN product lineup, digiTHIN X comes in at a convenient 600 x 337.5mm chassis size and is perfectly placed to complement your existing digiTHIN HD screens with the exception that it is fully proofed for exterior locations.

## Re-Designed For Improved Heat Dissipation

digiTHIN X has been comprehensively re-designed for outdoor installations, with updated Z adjusters enabling precise flatness adjustment and efficient heat-dissipating materials around the rear PDP delivering fanless cooling..

## Upgraded Electronics

Upgraded driver ICs, more efficient PSUs, intelligent electronic re-design and many other subtle but important tweaks make digiTHIN X better in so many ways.

## 2 LED Types Available

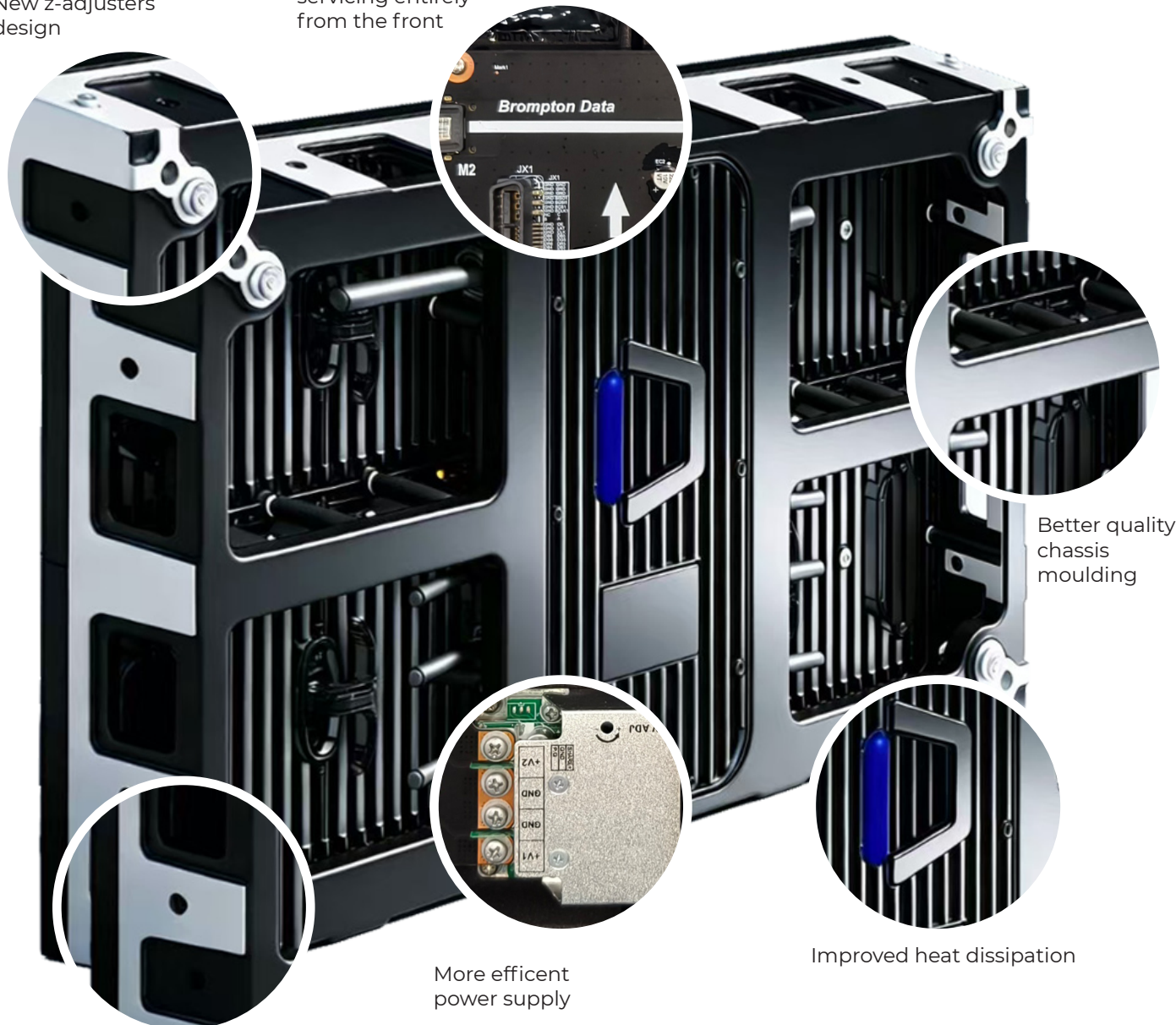
digiTHIN X standard comes as MIP and for enhanced brightness digiTHIN X uses COB technology.

## digiLED ZEUS®

Included as standard, digiLED's renowned Zero Energy Use System cuts standby power consumption to ZERO, reducing operating costs and environmental impact.

New z-adjusters design

Enclosed PDP with servicing entirely from the front

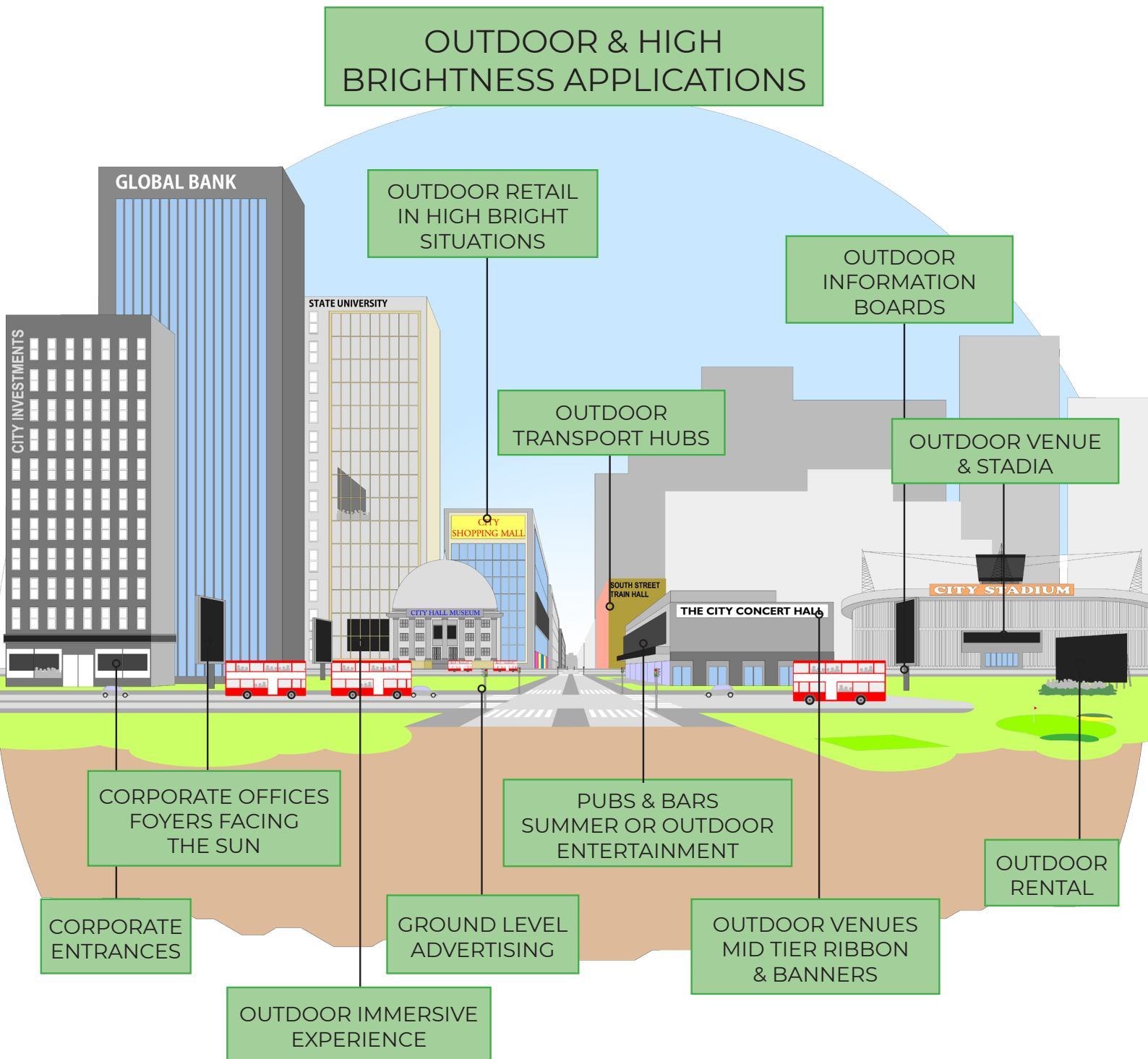


Better quality chassis moulding

Improved heat dissipation

More efficient power supply

Lower and side mounted kissing pins for super accurate alignment







Canary Wharf, London UK

## SPECIFICATIONS

### OUTDOOR MIP

		digITHIN X1250o	digITHIN X1560o	digITHIN X1875o
Physical Pixel Pitch (HxV)	mm	1.25	1.563	1.875
Pixel Resolution (Width/Height)	pixels/panel	480/270	384/216	320/180
LED Type		MIP		
Panel Dimensions	(W x H x D) mm	600 x 337.5 x 65		
Standard Panel Area	m2	0.2025		
Standard Weight	kg/m2	32.1		
Diagonal Dimension	ins (metric ins)/mm	22 5/8" (22.6")/574		
Ingress Protection	(Front/Rear)	Outdoor IP65/IP54		
Maintenance Access		All Front		
Enhanced Refresh Rate ****	Hz	≥3840		
Uncalibrated Brightness*	nits	≥3500		
Calibrated Brightness*	nits	≥3000		
Input Voltage	VAC/Hz	100-240/50-60		
Maximum Power Consumption**	W/m2	665		
Typical Power Consumption**	W/m2	221		
Operating Temperature (min/max)	degC	-10 to +50		
Certification***		CE (IEC62386-1), EMC, LVD, FCC, CCC, UL, RoHS, TÜV, TÜV Pull test, ETL (TBC)		
HDR****		(see foot note)		

### OUTDOOR COB

		digITHIN X1250o	digITHIN X1560o	digITHIN X1875o
Physical Pixel Pitch (HxV)	mm	1.25	1.563	1.875
Pixel Resolution (Width/Height)	pixels/panel	480/270	384/216	320/180
LED Type		COB		
Panel Dimensions	(W x H x D) mm	600 x 337.5 x 65		
Standard Panel Area	m2	0.2025		
Standard Weight	kg/m2	32.1		
Diagonal Dimension	ins (metric ins)/mm	22 5/8" (22.6")/574		
Ingress Protection	(Front/Rear)	Outdoor IP65/IP54		
Maintenance Access		All Front		
Enhanced Refresh Rate ****	Hz	≥3840		
Uncalibrated Brightness*	nits	≥4500		
Calibrated Brightness*	nits	≥4000		
Input Voltage	VAC/Hz	100-240/50-60		
Maximum Power Consumption**	W/m2	890		
Typical Power Consumption**	W/m2	300		
Operating Temperature (min/max)	degC	-10 to +50		
Certification***		CE (IEC62386-1), EMC, LVD, FCC, CCC, UL, RoHS, TÜV, TÜV Pull test, ETL (TBC)		
HDR****		(see foot note)		

Specifications are for standard system configuration. Contact your digiLED expert for detailed specification.  
Standard refresh rate >1,920Hz, upgrade refresh rate 3,840Hz unless otherwise stated.

Enhanced Brightness are subject to LED & driver IC selection - to be confirmed at the point of order.

\*The figures shown for brightness are MCAB (maximum consolidated average brightness) measured over a 3 year period.

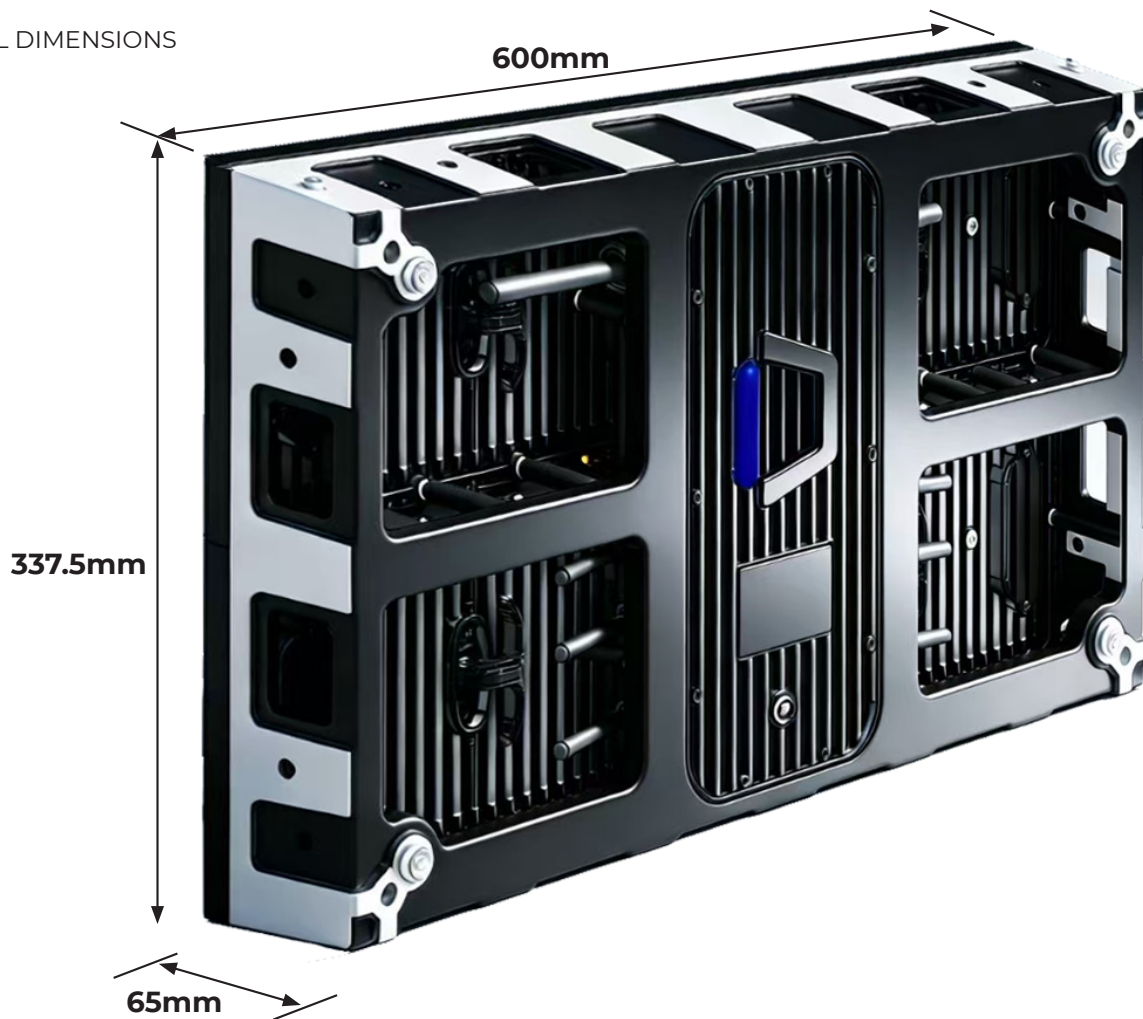
\*\*The figures shown for power consumption are standard guideline figures only and based on average test laboratory conditions.

\*\*\* CE comes with IEC (EN) 62368-1

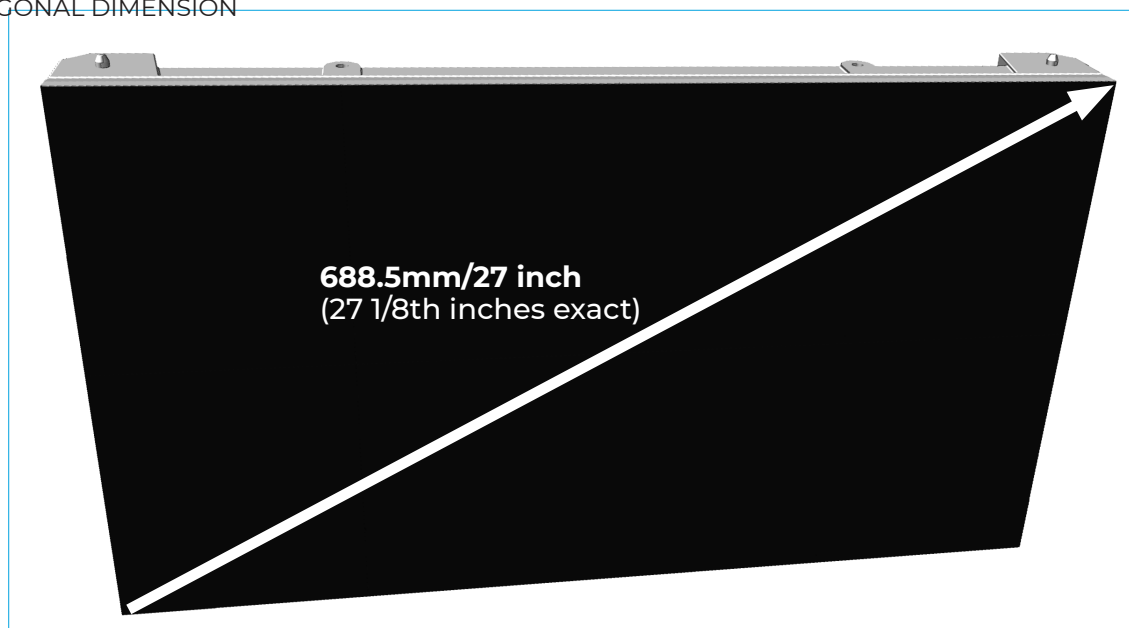
\*\*\*\*HDR: Subject to system configuration and processing. With enhanced Driver ICs capable of up to 1:24 scan rate.  
E&OE.

## PANEL DETAIL

PANEL DIMENSIONS



PANEL DIAGONAL DIMENSION





BUILT WITH PREMIUM COMPONENTS: THE HIGHEST GRADE PARTS THROUGHOUT



BACKED BY OUR OWN HIGHLY KNOWLEDGEABLE digiLED TECH HUB QC ENGINEERS, THE INDUSTRY'S LEADING QC TEAM



COMES WITH A 5 YEAR WARRANTY: TECH HUB SERVICES LOCATED in US, UK, ASIA and SOUTH AFRICA



INCLUDES AN ENHANCED & COMPREHENSIVE SPARES PACKAGE



AN APPRECIATION FOR QUALITY



BUILT IN TRUSTED, PREMIUM PARTNERS ASSEMBLY PLANTS: MONITORED AND QUALITY CONTROLLED BY digiLED TECH HUB ENGINEERS



SUBJECT TO A COMPREHENSIVE 228 STEP QC PROGRAMME FROM POINT OF ORDER RIGHT THROUGH TO HANDOVER



FULLY CERTIFIED: CE, UKCA, FCC, CCC, ETL, RoHS, LVD, EMC



OPTION: BUILT-IN digiLED's ZEUS POWER MANAGEMENT SYSTEM AT ADDITIONAL COST



### digiLED ZEUS®

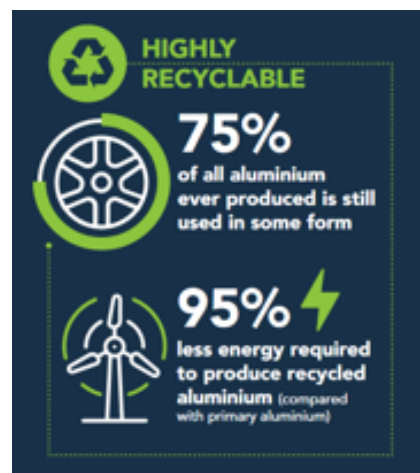
LED Screens used in commercial installations rarely operate 24/7. Venues and auditoriums don't have a permanent audience. A dirty secret of our industry is that often, when a screen is not in use, it is simply displaying a black image or video. The power is still live, using 7% to 17% of the maximum energy consumption or, looked at another way, up to 50% of the average energy usage!

Designed in the UK, digiLED's patented digiLED ZEUS® stands for "Zero Energy Use System". A screen set to black with digiLED ZEUS® will use ZERO power. More details can be found on digiLED ZEUS® in the dedicated digiLED ZEUS® brochure.

### Recyclable Material

Aluminium is used extensively in digiLED's LED tiles and the frames/chassis. As one of the most widely recycled materials on earth, this gives excellent options when considering how to dispose of an end-of-life digiLED screen.

LED tiles that are constructed out of aluminum retain a high materials value at the end of their life. These are much more likely to be shredded and metal-extracted before waste processing is considered complete.



Copper also makes up a large percentage of the product by weight - again, easily recyclable.

RoHS standards are closely monitored during production (and other international standards appropriate to the region). An example of this is the environment, chemical and processes audit of one of our production lines by Sony before they approved the use of digiLED.

**Direct-to-wall Mounting:**

Fixing an LED screen directly to the wall, without a frame, eliminates the need for the manufacture of a metal structure, saving time, money and travel/transport costs. No additional materials or bracketry need be used, the LED panels are mounted to an approved building material, typically plywood, MDF or plasterboard such as Gyproc Habito.

**228-Step Production Plan**

The digiLED 228-step Production Plan helps us manage processes so we can hit schedules and plan logistics efficiently, therefore avoiding the need to revert to air freight which uses 44 times more CO2 than a ship. The 228-Step Production Plan also ensures that digiLED makes high quality products, meaning that it will give years of reliable, trouble-free service; the best decision for the environment is not to buy on price but to buy a product that will last for years.

**Shipping**

Sea freight is prioritised as the shipping method from China as it uses 44 times less CO2 than air transport delivery.

**Serviceable**

digiLED always briefs clients that a well-maintained screen will have a life expectancy of 10 years plus. As a company, we stand by this by offering tech support and parts for all legacy products. Currently, the oldest clients screen supported by digiLED is 14 years old and requires windows XP to operate it - but it still operates.



## Our Ethos

Our goal is to do business with suppliers and customers whose company we enjoy and whose principles and values we respect.

We endeavour to be politely firm in our beliefs and steadfastly uphold our standards by doing the job correctly to produce quality products, supplied with loving care, to customers who cherish our systems and the enthusiastic, friendly expertise we strive to provide.

We love our work and are proud of our experience and our expertise. We want to do business with people who see the benefits of what we do and appreciate our input.

digiLEDers are keen to offer advice and an insight into our specialist knowledge without demanding a commercial return, if we can't convince customers of our value, we don't deserve their patronage.

## Our Products

Huge, bright, vibrant, bespoke, digiLED screens are designed by seasoned LED experts, then crafted and assembled in selected, specialist factories.

Assembly, production and testing is monitored by the industry's leading QC team, using a proven 228-step manufacturing QC process paying meticulous attention to fine detail.

The resulting digiLED screens exhibit superior images, provide reliable performance and extended life. Supported locally by experienced, qualified, field and bench engineers. **digiLED quality just lasts.**



## CONTACT US

### LONDON

UK HEAD OFFICE

The Pixel Depot, Copse Farm, Moorhurst Lane, Beare Green, Surrey RH5 4LJ UK

tel: +44 20 7381 7840 e-mail: [info@digiLED.com](mailto:info@digiLED.com)

 [Sales](#)  [Admin](#)  [Pixel Depot](#)  [Tech Hub](#)  [Service Lab](#)

---

### LAS VEGAS

The Pixel Depot, 365 Pilot Road, Suite A, Las Vegas, Nevada, 89119, USA

tel: +44 20 7381 7840 e-mail: [info@digiLED.com](mailto:info@digiLED.com)

 [Sales](#)  [Admin](#)  [Pixel Depot](#)  [Tech Hub](#)  [Service Lab](#)

---

### DALLAS

digiLED Service Lab, 8291 Gateway Dr, Argyle, TX 76226, USA

 [Service Lab](#)

---

### SHENZHEN

SHENZHEN DIGI TECHNOLOGY CO. LTD,

The Pixel Depot, Room 1807, Haohai Junyue Bldg, 2092 Shenyang Road, Hai Shan Street, Yantian District, Shenzhen 518000, China

 [Tech Hub](#)  [Logistics](#)  [Service Lab](#)

---

SALES OFFICES IN MILAN, THE HAGUE, NANTES AND TOKYO

Talk to us and be social

+44 20 7381 7840 [info@digiLED.com](mailto:info@digiLED.com) [www.digiLED.com](http://www.digiLED.com)  
 [digiLED\\_](#)  [digiLEDscreens](#)  [digiLEDscreens](#)  [digiLED\\_](#)