

VISION S



HIGH QUALITY SPORTS AND DOOH LED SCREEN SYSTEM
CUSTOM CURVING POSSIBILITIES
VIVID COLOUR
ENERGY EFFICIENT PERFORMANCE
FRONT AND REAR MAINTENANCE
DIP & SMD OPTIONS AVAILABLE

VISION S FEATURES



Servicing

Front/rear service, easy to maintain & install. Full-closed IM design, anti-moisture, and anti-dust. Self-cooling module design.

Vivid colours

High gray scale, wide viewing angles and a high contrast ratio all contribute to the vivid and natural images of VISION S. Moreover, anti-UV treatment ensures the LED tiles benefit from an extra long lifespan.



Reliability

With reliable electronics built-in and particular attention paid to sealing and waterproofing, VISION S can outperform many competitors. The system is rated at IP65 with ingress protection from moisture, dust, and heat/cold thermal cycling.

Intelligent monitoring

With built-in smart chip technology VISION S can monitor your displays parameters and alert in real time via The Cloud. You can set temperature, voltages, auto calibration and operating time parameters in real time.

digiled Application Experts

- Site surveys, install design & visuals
- Procurement / installation of screen surface & structures
- System commissioning & ongoing maintenance / warranty

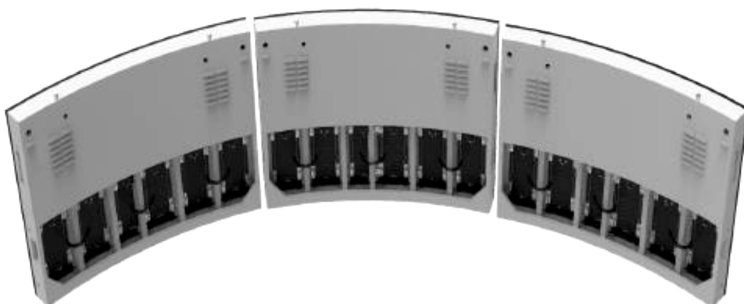
Optional DIP tiles

With VISION S you have the option of DIP tiles, which will give you the benefit of super low power consumption and with DIPs clever double mask design your project will look better than ever in harsh sunlight.



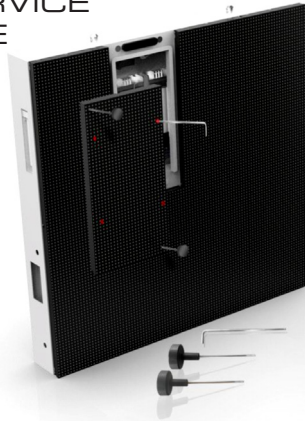
Curvable

digiled VISION S offers both convex and concave curving, allowing you to create custom curves to fit with your project's needs.

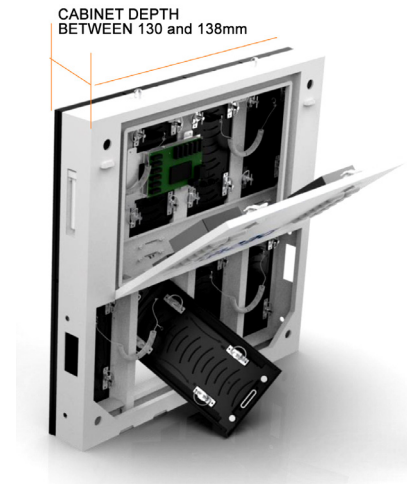


VISION S FEATURES

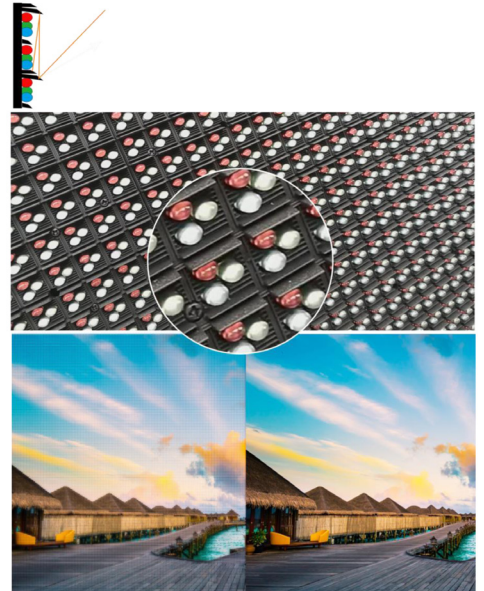
FRONT & REAR SERVICE
AND MAINTENANCE



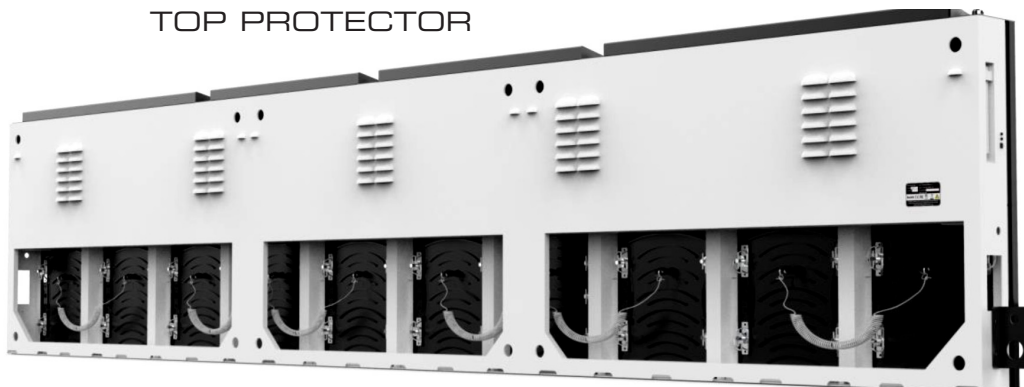
SLIM CABINET DESIGN



DIP & SMD TILES
AND DOUBLE
MASK LOUVER
DESIGN

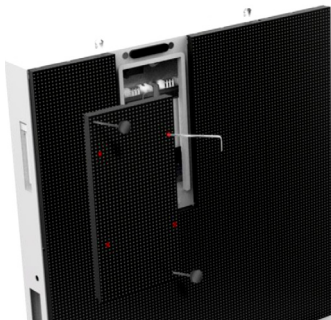


LONGER PANEL WITH WATERPROOF
TOP PROTECTOR



VISION S

PRODUCT SPECIFICATIONS



	VISION S4760o	VISION S6250o	VISION S8330o	VISION S10o	VISION S10oDIP	VISION S15oDIP
Physical Pixel Pitch (HxV) mm	4.762	6.250	8.333	10.00	10.886	15.24
Pixel Resolution (Width/Height) pixels/panel	168/168	192/128	144/96	120/120	112/84	80/60
Panel Dimensions (W x H) mm	800x800	1200x800	1200x800	1200x800	1219x914	1219x914
Optional Panel Dimensions (W x H) mm	N/A	1200x1600	1200x1600	1200x1600	1220x1220	1220x1220
Panel Depth mm	130	130	130	130	138	138
Standard Panel Area m2	0.64	0.96	0.96	0.96	1.115	1.115
Standard Weight kg/m2	46.9	41.66	41.66	41.66	48	48
Ingress Protection (Front/Rear)	Indoor IP65/IP43					
Maintenance Access	All Front or All Rear					
Standard Refresh Rate Hz	≥1920					
Uncalibrated Brightness* nits	≥6000	≥6500	≥6500	≥6500	≥6000	≥6000
Calibrated Brightness* nits	≥5500	≥6000	≥6000	≥6000	≥5500	≥5500
Input Voltage VAC/Hz	100~250/50-60					
Max Power Consumption** W/sqm	700	710	740	760	400	450
Typical Working Power Consumption** W/sqm	210	213	222	228	120	135
Operating Temperature (min/max) degC	-20/+45					
Certification	CE (IEC82368-1), FCC, ETL, EMC, LVD, RoHS					
HDR***	(see foot note)					

All specifications are subject to change without prior notification. E&OE.

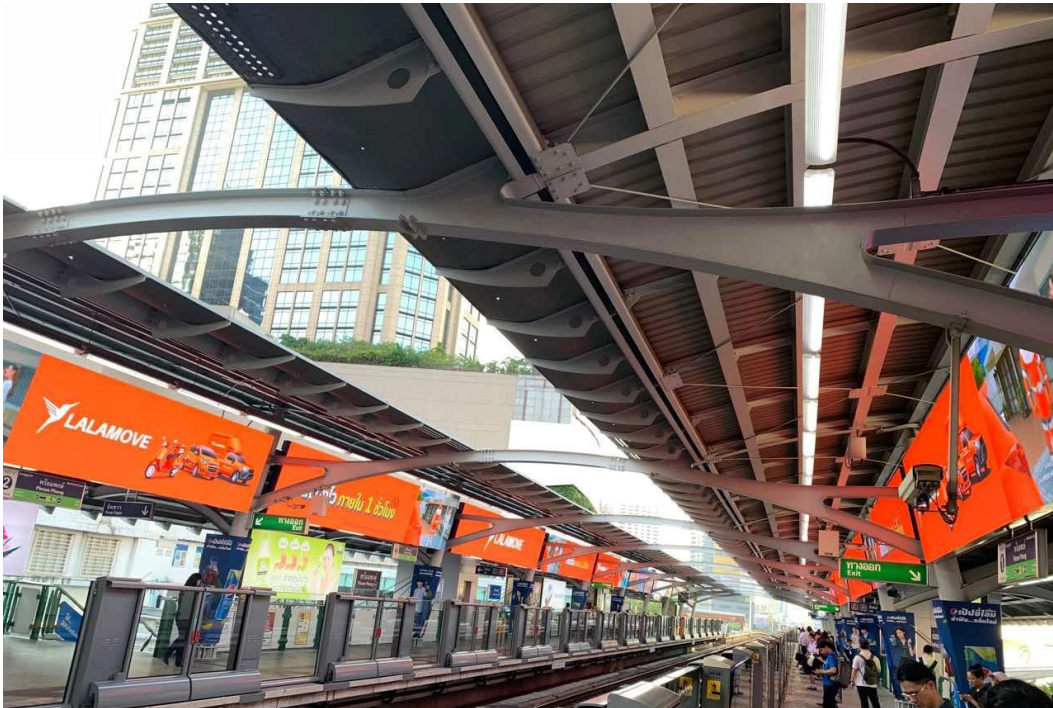
Specifications are for standard system configuration. Contact your digiLED expert for detailed specification.

*The figures shown for brightness are standard guidelines figures only and based on average test laboratory conditions.

** The figures shown for power consumption are standard guidelines figures only and based on average test laboratory conditions.

***HDR: Subject to system configuration and processing.

VISION S
APPLICATIONS



APPLICATIONS

OUTDOOR SPORTS STADIUMS • OOH MEDIA SCREENS • TRANSPORTATION HUBS
BUILDING CORNERS • MULTI-SIDED SCREENS • INFORMATION BOARDS • DIGITAL SIGNAGE



VISION S
APPLICATIONS

