

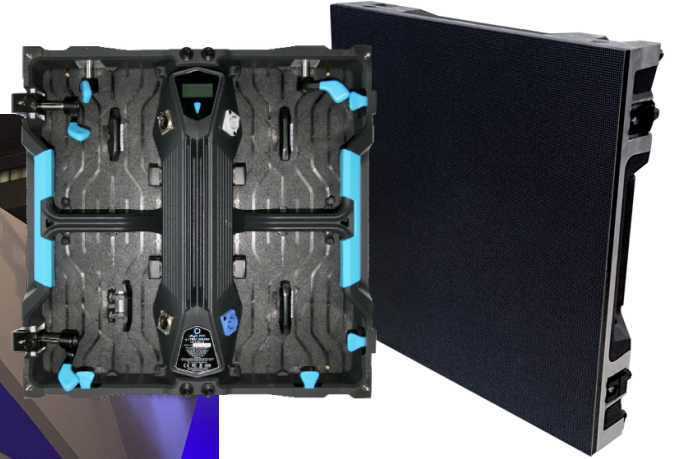
X-TEK



CREATIVE, SEAMLESS, CURVABLE AND
SENSATIONALLY SMOOTH
HIGHLY ENGINEERED
RELIABILITY WITHOUT SACRIFICING QUALITY
UNRIVALLED BRIGHTNESS FOR SUPREME PERFORMANCE
SYSTEM HEALTH AND FUNCTIONALITY MONITORING
A SUPER SMOOTH SYSTEM THAT FULFILLS ALL OF YOUR
CREATIVE CONCEPTS

X-TEK FEATURES

- Based on front or rear access with discreet hex screw fixings for the LED tile
- Highly accurate curving capabilities in both concave and convex planes
- Certified with CE, EMC, LVD, RoHS and FCC
- Hot back up data signal emergency activation
- Extruded aluminium frame construction for superior tolerances



digiLED Application Experts

- Site surveys, install design & visuals
- Procurement / installation of screen surface & structures
- System commissioning & ongoing maintenance / warranty

Easy installation & maintenance

Every component is easy to access front or rear so no hidden nightmares when it comes to quick swap outs.

Image quality

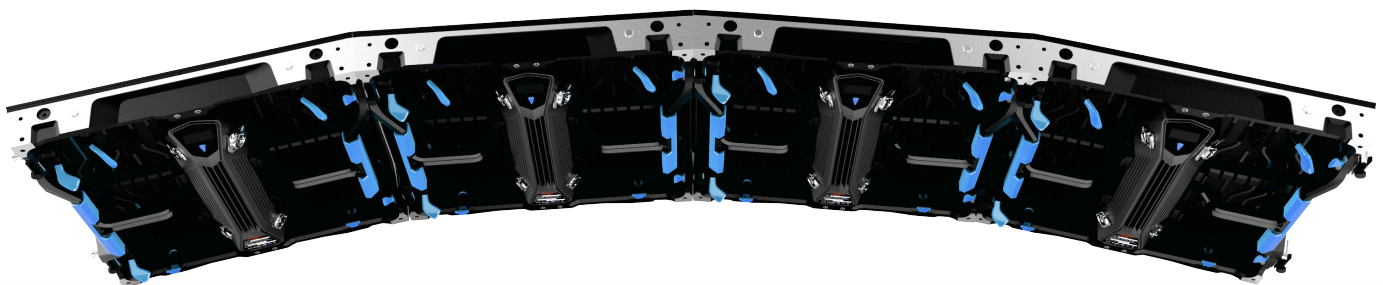
digiLED's image quality is renowned in the LED screen industry, but ultimately this is just a function of component selection and processing path. The thing that you can be sure of is that we're using the highest quality single bin, single batch LEDs and MBI drivers to deliver legendary images and camera friendly performance with refresh rates >1,920Hz.

Future proof

Our ethos is that calibration is not for the now, it's about future-proofing your LED screen's uniformity. We use the very best LEDs with tightly defined wavelengths, but as all LEDs age slightly differently, our calibration technology gives us the ability, in years to come, to bring your screen back to its beautiful best, quickly, efficiently and with little fuss.

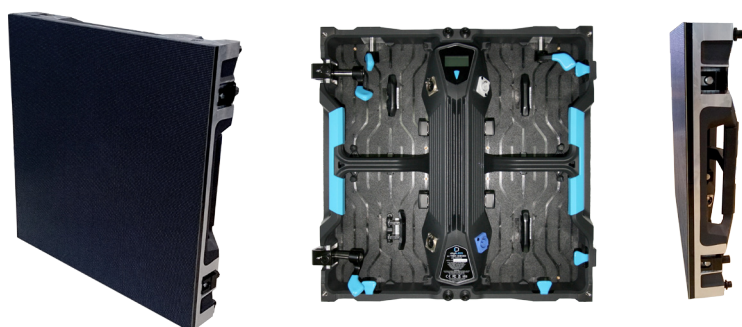
Power to the ROI

As the price of LED screens fall, the costs of installation and running a system become a bigger percentage on the P&L. Working at a low power consumption, x-TEK is a stellar performer, and when you take the universal view; low installation costs and redundancy features, it's clear that x-TEK is a complete star.



X-TEK INDOOR

PRODUCT SPECIFICATIONS



		X-TEK1560	X-TEK1560GOB	X-TEK1950	X-TEK1950GOB	X-TEK2600	X-TEK2910	X-TEK3910
Physical Pixel Pitch (HxV) mm		1.563	1.563	1.953	1.953	2.604	2.976	3.906
Pixel Resolution (Width/Height)	pixels/panel	320/320	320/320	256/256	256/256	192/192	168/168	128/128
Panel Dimensions	(W x H x D) mm	500 x 500 x 100						
Curving	degrees	-/+10						
Corner Option Available	degrees	Yes (90 degrees)						
Standard Panel Area	m2	0.25						
Standard Weight	kg/m2	40						
Ingress Protection	(Front/Rear)	Indoor IP30/IP30						
Maintenance Access		Front or Rear - all components						
Standard Refresh Rate	Hz	≥2880 (TBC)	≥2880 (TBC)	≥2880 (TBC)	≥2880 (TBC)	≥1920 (TBC)	≥1920 (TBC)	≥1920 (TBC)
Uncalibrated Brightness*	nits	≥720	≥720	≥900	≥900	≥1700	≥1700	≥1700
Calibrated Brightness*	nits	≥600	≥600	≥800	≥800	≥1500	≥1500	≥1500
Input Voltage	VAC/Hz	100~240/50-60						
Max Power Consumption**	W/sqm	720	720	760	760	660	620	600
Typical Working Power Consumption**	W/sqm	216	216	228	228	198	186	180
Operating Temperature (min/max)	degC	-10/+40	-10/+40	-10/+40	-10/+40	-10/+40	-10/+50	-10/+40
Certification		CE (IEC82368-1 TBC), FCC, ETL, EMC, LVD, RoHS						
HDR***		(see foot note)						

All specifications are subject to change without prior notification. E&OE.

Specifications are for standard system configuration. Contact your digiLED expert for detailed specification.

*The figures shown for brightness are standard guidelines figures only and based on average test laboratory conditions.

** The figures shown for power consumption are standard guidelines figures only and based on average test laboratory conditions.

***HDR: Subject to system configuration and processing.

X-TEK OUTDOOR

PRODUCT SPECIFICATIONS



	X-TEK3910o	X-TEK5210o
Physical Pixel Pitch (HxV) mm	3.906	5.208
Pixel Resolution (Width/Height) pixels/panel	128/128	96/96
Panel Dimensions (W x H x D) mm	500 x 500 x 100	
Curving degrees	-/+10	
Corner Option Available degrees	Yes (90 degrees)	
Standard Panel Area m2	0.25	
Standard Weight kg/m2	38.4	42
Ingress Protection (Front/Rear)	Outdoor IP65/IP65	
Maintenance Access	Front or Rear - all components	
Standard Refresh Rate Hz	≥1920 (TBC)	
Uncalibrated Brightness* nits	≥6000	≥6000
Calibrated Brightness* nits	≥5000	≥5000
Input Voltage VAC/Hz	100~250/50-60	
Max Power Consumption** W/sqm	640	600
Typical Working Power Consumption** W/sqm	192	180
Operating Temperature (min/max) degC	-20/+45	
Certification	CE (IEC82368-1 TBC), FCC, ETL, EMC, LVD, RoHS	
HDR***	(see foot note)	

All specifications are subject to change without prior notification. E&OE.

Specifications are for standard system configuration. Contact your digiLED expert for detailed specification.

*The figures shown for brightness are standard guidelines figures only and based on average test laboratory conditions.

** The figures shown for power consumption are standard guidelines figures only and based on average test laboratory conditions.

***HDR: Subject to system configuration and processing.

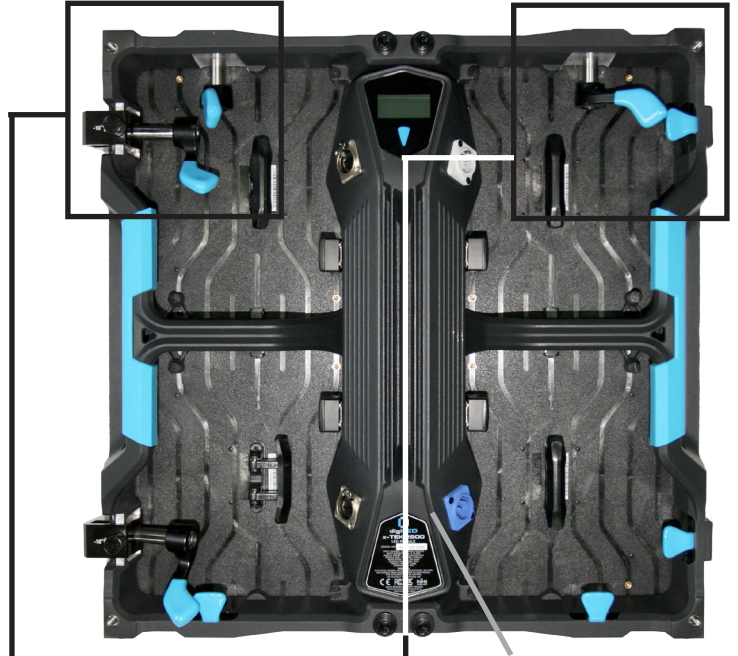
X-TEK

PANEL INFORMATION

Front View



Rear View with inset detail



Main spine PDP



Top to bottom and side to side locking pins and curving wedges



Top to bottom and side to side locking pins

X-TEK

PANEL INFORMATION

COMPONENTS

Magnetic Tile Design



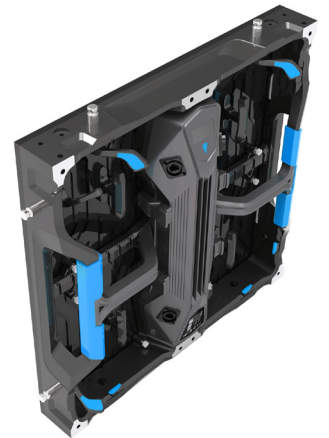
Magnetic LED Tiles



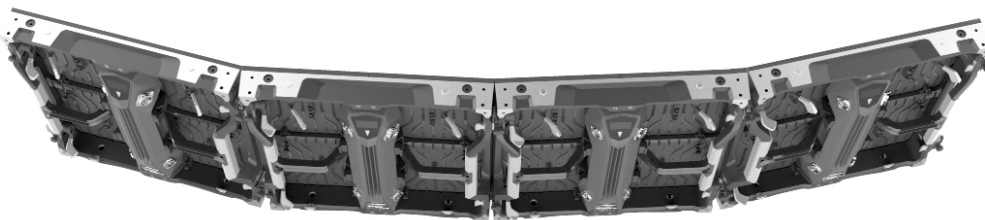
Main Chassis



PDP



CURVING



Up to 10 degrees concave curve



Up to 10 degrees convex curve

X-TEK

SUPPORT ACCESSORIES

GROUND SUPPORT



STRAIGHT
GROUND
SUPPORT



CURVED GROUND SUPPORT

HANGING SUPPORT

